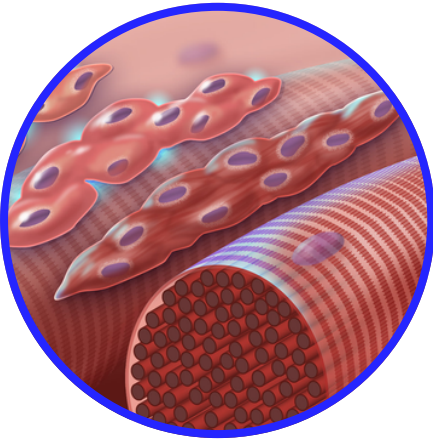
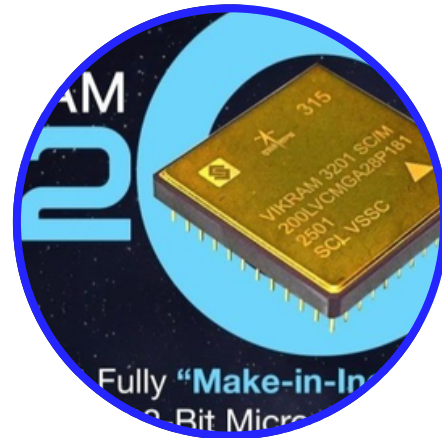


UPSC / KPSC/RFO/KEA/ PSI/ESI/VO/GROUP -C

MONTHLY MAGAZINE



LENSE (Latest Events and News Analysis Series)



FEATURS

- ✓ Day wise analysis
- ✓ Classes in YouTube
- ✓ Mains & Prelims Oriented
- ✓ Monthly Coverage
- ✓ Analysis through MCQS
- ✓ Exam -Focused Presentation
- ✓ Botrytis Fungi
- ✓ Myogenesis
- ✓ Financial Stability Report
- ✓ Dravidoseps
- ✓ Bond Yield
- ✓ INS Udaygiri

1 July (Tuesday)

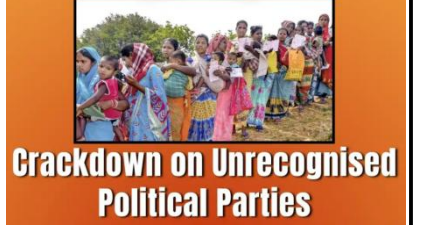
- 1) ECI's Crackdown on Unrecognised Political Parties
- 2) Botrytis Fungi
- 3) Khasi People
- 4) Myogenesis

1) ECI's Crackdown on Unrecognised Political Parties

EC crackdown: **345 unrecognised parties** face **delisting**; failed to contest polls or verify office locations

Why in news: The Election Commission of India (ECI) has initiated

steps to de-list 345 Registered Unrecognised Political Parties (RUPPs).



Q) Consider the following statements with reference to the Election Commission of India's recent action to delist Registered Unrecognised Political Parties (RUPPs):

- 1) RUPPs are registered under Section 29A of the Representation of the **People Act, 1951**.
- 2) They lose recognition primarily because **they fail to secure the required** vote share or seats in elections.
- 3) The Election Commission presently has the **power to** both **delist** and de-register political parties.
- 4) The Law Commission has recommended amending the RP Act to empower the Election Commission to de-register non-compliant parties.

Which of the above statements are correct?

- (a) 1, 2 and 4 only
- (b) 1 and 3 only
- (c) 2 and 4 only
- (d) 1, 2, 3 and 4

Answer: (a) 1, 2 and 4 only ECI can only delist, **not de-register** parties, due to Supreme Court rulings and legislative gaps. **RUPPs** must contest elections, maintain offices, and file audit and donation reports. Cash donations over ₹2,000 are restricted.

2. Botrytis Fungi

Why in news: Recently, researchers from Sichuan University and the University of British Columbia have found **that botrytis fungi (Botrytis cinerea) cannot be cloned**

Q) Recently, researchers from Sichuan University and the University of British Columbia found that which of the following fungi cannot be cloned due to its unique genetic structure?

- a) *Puccinia graminis*
- b) *Botrytis cinerea*





ನಮ್ಮ ಭೋಷಣೆ

ನಮ್ಮ FORESIGHT

IAS/KAS/ACF/PSI/VO/AO &AAO/RFO

- c) *Phytophthora infestans*
- d) *Aspergillus flavus*

Answer: b). *Botrytis cinerea* is a necrotrophic fungus with chromosomes spread across multiple nuclei, making cloning impossible.

Q) With reference to *Botrytis cinerea*, consider the following statements:

1. It is a **necrotrophic fungal pathogen** that feeds on dead or damaged tissues before infecting healthy plants.
2. It primarily infects **roots and rhizomes** of plants, avoiding aerial parts.
3. It releases acids such as **oxalic acid** to acidify its environment.

Which of the above statements are correct?

- a) 1 and 3 only
- b) 1 and 2 only
- c) 2 and 3 only
- d) 1, 2 and 3

Answer: a) 1 and 3 only. Statement 2 is incorrect — *Botrytis* affects **aerial parts** (flowers, fruits, leaves, stems, tubers), not roots.

3) Khasi People

Why in news: The Meghalaya High Court recently admitted a **PIL** that could determine the fate of hundreds of tribal certificate applications from the **Khasi community**, following a government decision that has effectively halted the issuance of ST certificates to certain categories of applicants.



Living Root Bridge of Khasi Tribes

Q) Consider the following statements about Public Interest Litigation (PIL) in India:

1. PIL is filed in the court to protect the **public interest** rather than the interest of an individual.
2. PIL can be filed by **any member of the public or organization** on behalf of people whose rights are affected.
3. PIL is only applicable in **civil cases related to property disputes**.
4. PILs have played a significant role in promoting **environmental protection, tribal rights, and social justice**.

How many statements is/are correct?

- a) Only 2 Statements are correct
- b) Only 3 Statements are correct
- c) None of the above are correct
- d) All four statements are correct

Answer: b). 1, 2 and 4

Q) With reference to the Khasi people, recently in news, consider the following statements:

1. They are an indigenous tribe primarily belonging to the **Khasi and Jaintia Hills** regions of **Meghalaya**.



ನಮ್ಮ ಭವಿಷ್ಯ

IAS/KAS/ACF/PSI/VO/AO &AAO/RFO

2. Khasi society follows a **matrilineal** system, where lineage and inheritance pass through the **mother's line**.
3. The Khasi trace their **migration from Tibet or Burma** around **500 B.C.**
4. Their traditional musical instruments include the **Duitara** and **Tangmuri**.
5. The **Khasi language** belongs to the **Indo-Aryan** family.

How many of the above statements are **correct**?

- a) Only two
- b) Only three
- c) Only four
- d) All five

Answer: c) Only four. Incorrect statement: 5 → Khasi language belongs to the **Austroasiatic (Mon-Khmer)** family, not Indo-Aryan.

Major festivals include **Shad Suk Mynsiem**, **Nongkrem Dance**, and **Behdienkhlam**. **Living Root Bridges** unique to the tribe.

4)

Axiom-4 mission: At International Space Station, Shubhanshu Shukla takes up experiment on skeletal muscle degradation in space

Axiom Space said that Shux (Group Captain Shukla's mission call sign) spent time in the Life Sciences Glovebox (LSG) working on the **Myogenesis experiment**.

Why in news:

Group Captain Shubhanshu Shukla recently launched groundbreaking **Myogenesis experiments** on the ISS, marking India's advancements in space research.

Q) Which of the following statements about Myogenesis is correct?

- a) Myogenesis is the process by which nerve cells are formed, regulated by MyoD and Myf5.
- b) Myogenesis is the process by which muscle fibers are formed, regulated by MyoD and Myf5.
- c) Myogenesis is the process of blood cell formation, regulated by MyoD and Myf5.
- d) Myogenesis is the process of bone formation, regulated by MyoD and Myf5.

Answer: b) Myogenesis is the process by which muscle fibers are formed, regulated by MyoD and Myf5.

2July (Wednesday)

- 1) Changes in India's Constitution
- 2) Mud Volcano
- 3) **Financial Stability Report – RBI**
- 4) **Animal Discoveries and Plant Discoveries 2024**

1) Changes in India's Constitution

Why in news: Vice President Jagdeep Dhankhar has criticised the Emergency-era inclusion of the words "**socialist**" and "**secular**" in the Constitution's Preamble, calling it a "**sacrilege to the spirit of Sanatan**".

Q) Consider the following statements about the 42nd Constitutional Amendment Act, 1976:



ನಮ್ಮ ಪೂರೈಕೆ

IAS/KAS/ACF/PSI/VO/AO & AAO/RFO

1. It inserted the words "**Socialist**" and "**Secular**" into the Preamble.
2. It added the word "**Integrity**" to promote national unity.
3. It was passed during the tenure of Prime Minister **Morarji Desai**.

Choose the correct answer:

- a) Only one statement is correct
- b) Only two statements are correct
- c) Only three statements are correct
- d) All the statements are correct

Answer: (b) Only two statements are correct (1 and 2 only)

The 42nd Amendment was enacted in 1976 under Prime Minister **Indira Gandhi**, not Morarji Desai.

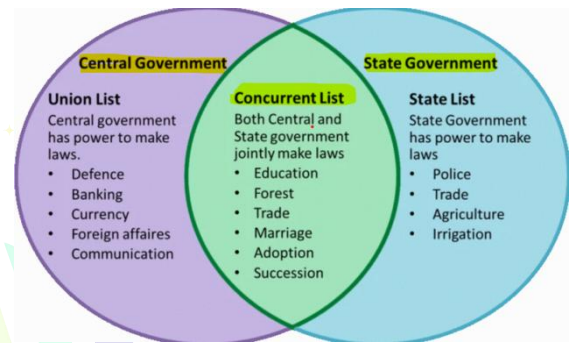
Q) By which Constitutional Amendment, the subject of 'Education' was transferred from State list to concurrent list?

(UKPSC RO/ARO: 2016)

1. 5th
2. 9th
3. 42nd
4. 44th

Answer: 3) 42nd

- The 42nd Amendment Act of 1976 moved **five subjects** from the **State List** to the **Concurrent List**. They are: **Education, Forests, Weights & Measures, Protection of Wild Animals and Birds, Administration of Justice**
- The **Concurrent List**, also known as **List-III (Seventh Schedule)**, is a list of **52 items** included in the Seventh Schedule of the Indian Constitution (though the last subject is numbered 47).
- The concept of Concurrent List was adopted from the **Australian Constitution**.



2) Mud Volcano

Why in news: The **Wandan mud volcano** recently erupted in **Taiwan**, sending bubbling mud shooting into the air as locals ignite ejected gases with burning rags.



Q) Which of the following gases are commonly released during a mud volcano eruption?

1. Methane
2. Carbon dioxide
3. Nitrogen
4. Sulphur dioxide

Select the correct answer using the code below:

- (a) 1 and 2 only
- (b) 1, 2, and 3 only
- (c) 2, 3, and 4 only
- (d) 1, 2, 3, and 4

IAS/KAS/ACF/PSI/VO/AO & AAO/RFO

Answer: (b) 1, 2, and 3 only

Mud volcanoes emit *methane, CO₂, and nitrogen*, not sulphur dioxide (a magmatic gas).

Q) In what key way does a *mud volcano* differ from a *magmatic volcano*?

- (a) Mud volcanoes have higher temperatures.
- (b) Mud volcanoes contain magma and lava.
- (c) Mud volcanoes are cooler and lack magma.
- (d) Mud volcanoes erupt from deep mantle sources.

Answer: (c) Mud volcanoes are cooler and lack magma

3) Financial Stability Report – RBI

Why in news: The Financial Stability Report (FSR) is a **biannual publication** of the RBI that assesses the resilience and risks of India's financial system to guide policy and preserve stability

Q) Which of the following is **not mentioned as an external risk to India's financial stability in the latest FSR?**

- (a) Climate change
- (b) Global trade disruptions
- (c) Technological innovation
- (d) Geopolitical tensions

Answer: (c) Technological innovation

Q) Consider the following statements regarding the **June 2025 Financial Stability Report (FSR) released by the RBI:**

1. The CPI inflation in May 2025 was above the RBI's upper tolerance band.
2. **Stress tests indicate** that banks and NBFCs remain adequately capitalised even under adverse economic scenarios.
3. The Indian financial system is supported by strong capital buffers, low NPAs, and healthy profitability.
4. The **Systemic Risk Survey** rated all major risk categories as 'high risk'.

Which of the above statements is/are correct?

- A. Only one statement is correct
- B. Only two statements are correct
- C. Only three statements are correct
- D. All the statements are correct

Answer: B. Only two statements are correct (2and3)

- CPI inflation in May 2025 was **2.82%**, below the RBI's upper tolerance band of 6%.
- The Systemic Risk Survey rated major risk categories as **medium risk**, not high.
- The FSR is prepared by RBI



4) Animal Discoveries and Plant Discoveries 2024

Why in news: The Zoological Survey of India (ZSI) and Botanical Survey of

683 species added to India's fauna, 433 taxa to its flora during 2024

With 101 species, Kerala recorded **highest number of fauna discoveries**, followed by Karnataka — 82; Tamil Nadu recorded 61 discoveries

Updated: July 01, 2024 01:54 pm IST - NDTV

SHIV SAHAY SINGH

READ LATER



India (BSI) annually publish discoveries of new fauna and flora, respectively.

Q) Which of the following is a **newly discovered genus** mentioned in India's faunal report?

- (a) Musa
- (b) Dravidoseps
- (c) Begonia
- (d) Rhizobium

Answer: (b) Dravidoseps

- **Hotspots:** The Western Ghats and Northeast India contributed 35% of the findings.
- Kerala state topped in **floral discoveries** during the recent survey **58 new floral taxa**, followed by Maharashtra and Uttarakhand.

3 July (Thursday)

- 1) Bond Yield
- 2) INS Udaygiri
- 3) Ghana

1) **Bond Yield**

Why in news: Yield on India's benchmark will stay soft in July, according to Bank of Research.

$$\text{Bond Yield Formula} = \frac{\text{Annual Coupon Payment}}{\text{Bond Price}}$$

10-year bonds
Baroda (BoB)

Q) Consider the following statements regarding **bond yield**:

- 1. A bond is a fixed-income instrument where the **investor** lends money to a borrower for a specified period and earns interest known as the coupon.
- 2. **Bond yield** is calculated as the **ratio of coupon payment** to the **bond's purchase price** and moves directly with the bond's market price.
- 3. Bond prices and yields are inversely related; when interest rates rise, bond prices fall, and yields increase.
- 4. Governments and corporations issue bonds to finance projects, refinance debt, or fund public welfare.

Which of the above statements is/are correct?

- A. Only statements 1 and 3
- B. Only statements 1, 3, and 4
- C. Only statements 2 and 4
- D. All statements are correct

Answer: B. Only statements 1, 3, and 4

- Bond yield is **inversely related** to the bond price. Higher bond prices reduce yield, and lower prices increase yield.



ನಮ್ಮ ಭೋಷಣೆ

ನಮ್ಮ FORESIGHT

IAS/KAS/ACF/PSI/VO/AO & AAO/RFO

2) INS Udaygiri

Why in news: Recently, Yard 12652 (Udaygiri) being built at Mazagon Dock Shipbuilders Limited (MDSL), was delivered to the Indian Navy

Q) Consider the following statements regarding INS Udaygiri:

1. **INS Udaygiri** is the second frigate of **Project 17A** and a follow-up to the Shivalik-class (Project 17).
2. These stealth frigates are designed only for coastal operations and cannot operate in the open sea.
3. INS Udaygiri features CODOG (Combined Diesel or Gas) propulsion and an advanced Integrated Platform Management System (IPMS).
4. The project enhances India's defense manufacturing capabilities, supports MSMEs, and promotes self-reliance.

Which of the statements given above are correct?

- A. 1 and 3 only
- B. 2 and 4 only
- C. 1, 3, and 4
- D. 1, 2, 3, and 4

Answer: C. 1, 3, and 4. It is designed for **Blue Water operations**, not just coastal operations.

3) Ghana

Why in news: The Prime Minister of India is undertaking a significant multi-nation tour from July 2 to July 9, visiting **Ghana, Trinidad & Tobago, Argentina, Brazil, and Namibia** to strengthen India's bilateral ties and global partnerships.

Q) Consider the following statements about Ghana:

1. Ghana is located in **West Africa**, bordered by Côte d'Ivoire, Burkina Faso, and Togo.
2. The capital city of Ghana is **Kumasi**.
3. The **Volta River** system dominates Ghana's drainage, with Lake Volta being one of the **world's largest artificial lakes**.
4. Gold, cocoa, and oil form the backbone of Ghana's economy.

Which of the following is correct?

- A. Statements 1 and 3 only
- B. Statements 1, 3, and 4
- C. Only statement 4 is correct
- D. All except statement 1

Answer: B. Statements 1, 3, and 4



4 July (Friday)

- 1) Volume-Weighted Average Price
- 2) Financial Fraud Risk Indicator
- 3) Karivachalli Island

1. Volume-Weighted Average Price

Why in news: To make trading easier for institutional investors and market participants, SEBI recently made it mandatory to issue a Common Contract Note with a single volume weighted average price.

Q) Which of the following statements regarding Volume Weighted Average Price (VWAP) is/are correct?

1. VWAP is calculated using daily closing prices and is updated once a week.
2. It is useful for identifying intraday trends and helps traders optimize entry and exit points.
3. VWAP is derived by dividing the cumulative trading volume by the average price of the day.
4. VWAP may lag during the day as it is a cumulative indicator.

Options:

- A. only one statement is correct
- B. only 2 statements are correct
- C. only 3 statements are correct
- D. None of the statements are correct

Answer: B. only 2 statements are correct (2 and 4)

Statement 1: Incorrect, VWAP is calculated using **intraday data** (high, low, close, and volume) from **market open to close**, and it updates **throughout the trading day**, not weekly.

Calculation Method:

VWAP = (Typical Price × Volume) ÷ Cumulative Volume, where Typical Price = (High + Low + Close)/3.
It uses intraday data from market open to close.

2. Financial Fraud Risk Indicator

Why in news: Recently, the Reserve Bank of India's (RBI) directed all Scheduled Commercial Banks, Small Finance Banks, Payments Banks, and Co-operative Banks to integrate the Financial Fraud Risk Indicator (FRI) developed by the Department of Telecommunications (DoT) into their systems



Q) Consider the following statements about the Financial Fraud Risk Indicator (FRI):

1. It is launched by the Reserve Bank of India to classify risky bank accounts.
2. It categorizes **mobile numbers** based on their association with financial fraud risk.
3. FRI uses data from the **Chakshu platform** and **National Cybercrime Reporting Portal (NCRP)** for its classification.
4. The **Mobile Number Revocation List (MNRL)** is shared by the DIU under the Department of Telecommunications.

Which of the statements given above are Wrong?

- only one statement is wrong
- only 2 statements are wrong
- only 3 statements are wrong
- All the statements are wrong

Answer: A. only one statement is wrong

- Statement 1 is **incorrect** because FRI is launched by **DIU under DoT**, not RBI.
- Statements 2, 3, and 4 are correct

3. Kariyachalli Island

Why in news: Recently, the Tamil Nadu government has started an initiative to save the sinking Kariyachalli island.

Q) Which of the following statements regarding Kariyachalli Island is/are correct?

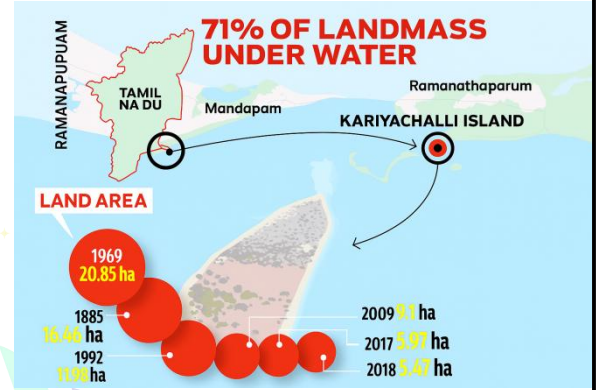
- Kariyachalli is one of the four coral reef islands located in the **Bay of Bengal**.
- The island has seen **over 70% shrinkage in landmass since 1969** due to natural causes.
- Tamil Nadu's **TNSHORE project** aims to restore marine life using **artificial reef modules and seagrass planting**.
- Kariyachalli is located near the **Gujarat coast** and is part of the **Gulf of Kutch Marine National Park**.

Options:

- only one statement is correct
- only 2 statements are correct
- only 3 statements are correct
- None of the statements are correct

Answer: B. only 2 statements are correct

- Kariyachalli is near **Rameswaram and Thoothukudi, Tamil Nadu**, and part of the **Gulf of Mannar Marine National Park**.



5 July (Saturday)

- Grand Ethiopian Renaissance Dam
- Garciniakusumae
- SAKSHAM-3000
- Apache AH-64E Attack Helicopter





ನಮ್ಮ ಭವಿಷ್ಯ

ನಮ್ಮ FORESIGHT

IAS/KAS/ACF/PSI/VO/AO &AAO/RFO

1. Grand Ethiopian Renaissance Dam

Why in news: Ethiopia's Prime Minister recently said the multi billion-dollar Grand Ethiopian Renaissance Dam (GERD) on the **Blue Nile** that has long worried neighbouring countries is complete and will be officially inaugurated in September.

Q) With reference to the Grand Ethiopian Renaissance Dam (GERD):

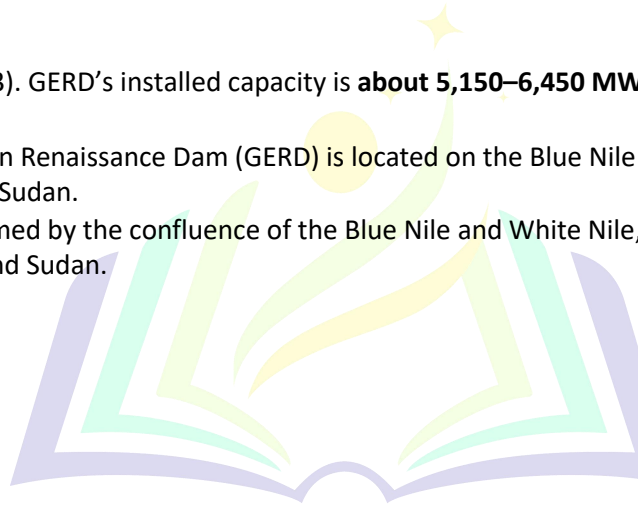
1. It is located on the **White Nile** in Ethiopia's Benishangul-Gumuz region near the Sudan border.
2. GERD has a total installed capacity of about **45 GW**, making it Africa's largest hydroelectric project.
3. Egypt and Sudan have opposed the dam due to concerns over reduced water flow in the Nile.

How many of the above statements are correct?

- (a) Only one
- (b) Only two
- (c) All three
- (d) None

Answer: (a) Only one (3). GERD's installed capacity is about 5,150–6,450 MW (≈ 6.4 GW), not 45 GW.

- The Grand Ethiopian Renaissance Dam (GERD) is located on the Blue Nile River in Ethiopia, about 30 km upstream from Sudan.
- **The Nile River**, formed by the confluence of the Blue Nile and White Nile, is crucial to the water security of Egypt and Sudan.



2. Garciniakusumae

Why in news: Recently, botanist's discovered a **new garcinia species** in **Assam** and named it as Garciniakusumae.

3. SAKSHAM-3000

Why in news: Recently, in a significant push towards self reliance and global competitiveness, Minister of State for Communications and Rural Development launched high capacity **SAKSHAM-3000**.


Q) With reference to SAKSHAM-3000, recently launched by the Ministry of Communications, consider the following statements:


1. **SAKSHAM-3000** is a high-capacity switch-router developed by **C-DOT** to support India's digital infrastructure needs.
2. It offers a maximum throughput of 25.6 Tbps and supports Ethernet speeds ranging from 1G to 400G.

SAKSHAM-3000

Context

The Minister of State for Communications and Rural Development launched the high-capacity SAKSHAM-3000.





SAKSHAM-3000

- It is a state-of-the-art data centre switch-cum-router designed for next-generation digital infrastructure developed by Development of Telematics (C-DOT).
- It is a high-capacity, compact **25.6 Tbps** switch-router designed for modern data centers, cloud infrastructure, 5G/6G networks, and AI workloads.
- It supports 32 ports of 400G with Ethernet speeds from 1G to 400G, offering ultra-low latency and modular C-DOT Router Operating System (CROS).
- It is versatile for various network roles, supports legacy and cloud-native protocols (Layer-2, IP, MPLS), and is energy-efficient with features for time-sensitive applications.

IAS/KAS/ACF/PSI/VO/AO &AAO/RFO

3. It is designed exclusively for 5G networks and is not compatible with cloud-native environments.

How many of the above statements are correct?

- (a) Only one
- (b) Only two
- (c) All three
- (d) None

Answer: (b) Only two (1 and 2)

- SAKSHAM-3000 is a high-capacity, high-performance switch-router developed by C-DOT (Centre for Development of Telematics) to support India's rapidly growing digital infrastructure.

4. Apache AH-64E Attack Helicopter

Why in news: The Indian Army is set to receive the first batch of long-awaited Apache AH-64E attack helicopters from the US soon.

Q) Which of the statements given below is/are correct Apache AH-64E helicopter?

- 1. It is equipped with a 120 mm rotary cannon and used exclusively by the US and NATO forces.
- 2. India has both Indian Air Force and Indian Army variants of the Apache AH-64E in service or on order.

- A. 1 only
- B. 2 only
- C. Both the statements are correct
- D. None of the statements are correct

Answer: B — 2 only. Statement 1 – Incorrect: The Apache AH-64E uses a 30 mm M230 Chain Gun, *not* a 120 mm cannon. It is *not* exclusive to the US or NATO—countries like India, Israel, Japan, Saudi Arabia, South Korea, and others use it.

TOI

IAF'S NEW COMBAT MUSCLE APACHE AH-64E

IAF inducts 8 Apache AH-64E attack helicopters on Sept 3, 2019

Manufactured by Boeing; used by US Army and international defence forces


To replace old Russia-made Mi-35 attack helicopters

THE APACHE ADVANTAGE

Two high-performance turboshaft engines for maximum cruise speed of 284km/hr

Advanced laser, infrared & target acquisition designation to attack targets

Laser guided precision Hellfire missiles, 70mm rockets, 30mm automatic cannon



World's most advanced multi-role combat helicopter

Wing Span: 17.15 ft

Height: 15.24 ft

SPECIFICATIONS

Primary mission gross weight	6,838Kg
Vertical rate of climb	More than 2000ft per min
Maximum rate of climb	More than 2,800ft per min

Source: Boeing, news reports

7 and 8 July (Monday and Tuesday)

- 1. National Biobank
- 2. Wildlife Institute of India
- 3. National Commission for Minorities
- 4. Siene River
- 5. Pethia dibrugarhensis
- 6. Satkosia Tiger Reserve

1. National Biobank

Why in news: National Biobank will serve as the backbone of a nationwide cohort study, collecting comprehensive genomic, lifestyle, and clinical data from 10,000 individuals across India

Q) With reference to the National Biobank, consider the following statements:

1. It is **established under the Phenome India Project**.
2. It **aims to collect genomic and clinical data** from 10,000 individuals across India.
3. It focuses exclusively on rare genetic disorders.

Which of the statements given above is/are correct?

- (a) 1 and 2 only
- (b) 2 and 3 only
- (c) 1 and 3 only
- (d) 1, 2 and 3

Answer: (a)

- It does *not* focus exclusively on rare genetic disorders; it covers diabetes, cancer, cardiovascular diseases, etc.
- **Launch:** The biobank was inaugurated in July 2025 at the CSIR-IGIB in New Delhi

What is a genome?

A genome is the complete set of genetic information in an organism. It provides all of the information the organism requires to function. In living organisms, the genome is stored in long molecules of DNA called chromosomes



ನಮ್ಮ ಪೂರೈಕೆ



2. Wildlife Institute of India

Why in news: A detailed review by the Wildlife Institute of India (WII) has highlighted the need for scientific, infrastructure-based and community-driven measures to improve the ecological management of Andhra Pradesh's wildlife sanctuaries

Q) With reference to the Wildlife Institute of India (WII), consider the following statements:

1. It is an **autonomous institution** under the Ministry of Environment, Forests, and Climate Change.
2. It was established to develop scientific knowledge on wildlife resources and train personnel in wildlife management.
3. Its governing board is chaired by the Prime Minister of India.

How many of the above statements are wrong?

- (a) Only one
- (b) Only two

Q) Where is the Wildlife Institute of India situated?

Ans: Dehradun district, Uttarakhand



ನಮ್ಮ ಪೋರ್ಸ್‌ಸೈಟ್

ನಮ್ಮ FORESIGHT

IAS/KAS/ACF/PSI/VO/AO &AAO/RFO

(c) All three

(d) None

Answer: a) (3). The board is chaired by the **Union Minister**, not the PM.)

3. National Commission for Minorities

Why in news: The National Commission for Minorities (NCM), set up with the vision to safeguard and protect the interests of minority communities in India.

Q) Which of the statements given below is/are correct with reference to the National Commission for Minorities (NCM),

1. The National Commission for Minorities is a **constitutional body** established under **Article 338 of the Constitution**.
2. It was originally set up in 1978 and gained statutory status after the enactment of the National Commission for Minorities Act, **1992**.
3. Only members belonging to notified minority communities can be appointed to the Commission.

- (a) 1 and 2 only
(b) 2 and 3 only
(c) 1 and 3 only
(d) 1, 2 and 3

Answer: (b) 2 and 3 only

- The National Commission for Minorities (NCM) is a **statutory body** under the **Ministry of Minority Affairs, established through the National Commission for Minorities Act, 1992**.
- Initially formed in 1978 as the Minorities Commission, it became **statutory in 1992**.
- **Article 338** of the Indian Constitution establishes **the National Commission for Scheduled Castes (NCSC)**

4. Siene River

Why in news: After more than a century, swimmers returned to the River Seine on Saturday, marking the first official reopening of the iconic waterway for public bathing since 1923.

Q) With reference to the Seine River, consider the following statements:

1. The Seine River originates in the **Burgundy region of eastern France**.
2. The river drains the Paris Basin, which supports significant agricultural and industrial activity.
3. The Marne River is the major right-bank tributary of the Seine.
4. The Seine empties into the Mediterranean Sea.

Which of the statements given above are correct?





ನಮ್ಮ ಪೂರೈಕೆ

ನಮ್ಮ FORESIGHT

IAS/KAS/ACF/PSI/VO/AO & AAO/RFO

- (a) 1, 2 and 3 only
- (b) 1 and 2 only
- (c) 2, 3 and 4 only
- (d) All four statements

Answer: (a) 1, 2 and 3 only. The Seine flows into the **English Channel**, not the Mediterranean.

5. Satkosia Tiger Reserve

Why in news: In a fresh controversy, the **Odisha government** recently floated a tender for the construction of a high-level bridge over the **Mahanadi river** near the ecologically sensitive Satkosia tiger reserve.

Q) With reference to the Satkosia Tiger Reserve, consider the following statements:

1. **Satkosia Tiger Reserve** spans across four districts of **Odisha** including **Angul and Nayagarh**.
2. The reserve includes the Satkosia Gorge Wildlife Sanctuary as well as the Baisipalli Wildlife Sanctuary.
3. It lies at the confluence of the Deccan Peninsula and Eastern Ghats biogeographic zones.
4. **The Godavari River flows** through the reserve, creating a narrow gorge landscape.

Which of the statements given above are correct?

- (a) 1, 2 and 3 only
- (b) 2 and 4 only
- (c) 1 and 3 only
- (d) All four statements

Answer: (a) 1, 2 and 3 only

6. Pethia dibrugahensis

Why in news: A team of scientists has discovered a new species of cyprinid fish in the Brahmaputra river at Maijan in Dibrugarh and named it as 'Pethia dibrugahensis'

SATKOSIA TIGER RESERVE

State: Odisha (India)

Districts covered: Angul, Cuttack, Boudh, Nayagarh

Total area: 1,136,70 km² (Buffer = 440.26 km²)

Constituted: 2007 (WLS since 1976)

Mahanadi gorge length: ≈22–22.5.5 km

Key habitats: Tiger, Elephant, Leopard, Gaur, Sambar, Crocodiles, Hornbills

Famous viewpoint: Tikarpada



New Cyprinid Fish Species
'Pethia dibrugahensis'
discovered in Brahmaputra



A new barb species, Pethia dibrugahensis, was discovered by ICAR-CIFRI and Manipur University researchers during a survey at Maijan, Dibrugarh. Found in moderately fast-flowing waters, it is marked by distinct morphological traits. Published in National Academy Science Letters, the finding highlights the need to document and protect the aquatic biodiversity of northeast India.

9 and 10 July (Wednesday and Thursday)

1. Kerala Oil Spill
2. Nyangai Island
3. Digital Platforms as Emerging Threat in Terror Operations
4. Miniature Plasma Loops
5. Extended Range Anti-Submarine Rocket
6. Admiralty (Jurisdiction & Settlement of Maritime Claims) Act, 2017



ನಮ್ಮ ಪೂರೈಕೆ

ನಮ್ಮ FORESIGHT

IAS/KAS/ACF/PSI/VO/AO &AAO/RFO

1. Kerala Oil Spill

Why in news: The Kerala High Court has conditionally arrested the Liberian container ship MSC Akiteta II, docked at Vizhinjam port, following an admiralty suit filed by the Kerala government.

Q) With reference to maritime environmental damage claims in India, consider the following statements:

1. Under the Admiralty Act, 2017, High Courts can arrest a vessel for securing environmental compensation claims.
2. Environmental damage caused by ships can be adjudicated only under the Admiralty Act, 2017.



Which of the statements given above is/are correct?

- (a) 1 only
- (b) 2 only
- (c) Both 1 and 2
- (d) Neither 1 nor 2

Answer: (a) 1 only. Statement 2 → Incorrect (Other laws also apply: Merchant Shipping Act 1958, Environment Protection Act 1986, NGT Act.)

Q) Consider the following statements regarding admiralty jurisdiction in India:

1. High Courts can exercise admiralty jurisdiction up to 12 nautical miles from the baseline.
2. Sister-ship arrest is permitted under the Admiralty Act, 2017 if the owner uses fraudulent corporate structuring to evade liability.
3. Admiralty jurisdiction was originally limited to three High Courts before the 2017 Act expanded it.

How many of the above statements are correct?

- (a) Only one
- (b) Only two
- (c) All three
- (d) None

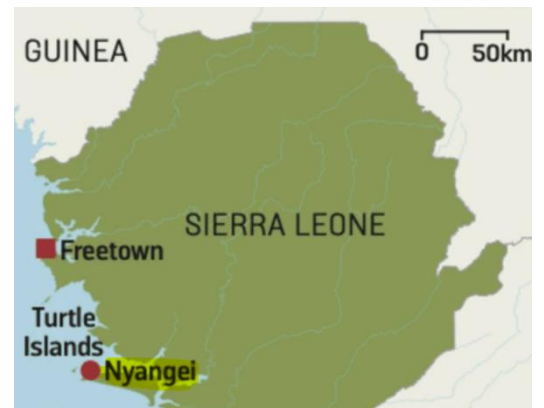
Answer: (c) All three

2. Nyangai Island

Why in news: In less than a decade, Nyangai island has lost two-thirds of its surface area, and now measures only about 200 metres long and 100 metres wide

Q) Which of the following statements about Nyangai Island is/are correct?

1. It has lost nearly two-thirds of its land area within the past



decade.

- It is part of **Sierra Leone's** inland river islands on the **Moa river**.
- The island contains historical ruins linked to the **slave trade era**.

Select the correct answer:

- 1 only
- 1 and 3 only
- 2 and 3 only
- 1, 2 and 3

Answer: B. It is part of the **Turtle Islands archipelago**, which lies **off the coast of Sierra Leone in the Atlantic Ocean**.

3. Digital Platforms as Emerging Threat in Terror Operations

Why in news: The Financial Action Task Force (FATF), in a report, highlighted that digital platforms—including online payments, VPNs, social media, and e-commerce—were misused in the Pulwama (2019) and Gorakhnath Temple (2022) terror attacks.

Q) Consider the following statements regarding the Financial Action Task Force (FATF):

- It was established at the G7 Summit in Paris to counter money laundering and terror financing.
- India is not a full member but only an observer of FATF.
- FATF maintains two public lists—Grey List and Black List—to identify high-risk jurisdictions.

Which of the statements given above are correct?

- 1 and 3 only
- 1 only
- 2 and 3 only
- 1, 2 and 3

Answer: A. 1 and 3 only. Statement 2 → **Incorrect** (India is a **full member** since 2010).

4. Miniature Plasma Loops

Why in news: Astronomers at the Indian Institute of Astrophysics (IIA), and their collaborators used high-resolution imaging and spectroscopy to catch miniature plasma loops elusive structures in action.

Q) Miniature plasma loops recently observed by Indian astronomers are located in which layer of the Sun?

MINIATURE PLASMA LOOPS IN SUN'S ATMOSPHERE: UNLOCKING THE MYSTERIES OF CORONAL HEATING

The Sun, our closest star, remains a object of immense curiosity and scientific study. While its surface temperature at 5,500 °C, its outer atmosphere this Sun corona reaches staggering temperatures of over a million degrees Celsius. This paradox involving miniature plasma loops in the Sun's atmosphere, made possible by NASA's High-resolution Coronal Imager (Hi-C) a Solar Dynamics Observatory (SDO), may finally play a crucial role in explaining how the Sun's corona heats up a question at the heart of all solar science since for over half a Century.

UNDERSTANDING THE SUN'S ATMOSPHERE

Lies consists of several layers:

- Core: Where nuclear fusion occurs.
- Photosphere: The visible surface.
- Chromosphere: A thin middle layer.
- Corona: The Sun's outermost and hottest layer, visible during solar eclipses.

What are Plasma Loops?

Plasma loops are arching structures made of hot, magnetized plasma that trace Sun's magnetic field lines. Traditionally observed loops range from thousands to hundreds of kilometers in size and have been associated with solar flares, coronal mass ejections, and other solar phenomena.

MINIATURE PLASMA LOOPS IN SUN'S ATMOSPHERE: UNLOCKING THE MYSTERIES OF CORONAL HEATING

However, recent observations by Hi-C and SDO uncovered new, miniature plasma loops that have uncovered new, miniature plasma loops, that only 100 km long, which previously have been visible due to resolution limitations.

THE DISCOVERY: MINIATURE LOOPS

Instruments Used:

1. **Hi-C (High-resolution Coronal Imager):** A sounding rocket telescope launched by NASA, capable of capturing solar images at 0.1 arcsecond resolution.
2. **SDO (Solar Dynamics Observatory):** Provides continuous imaging of the Sun across multiple wavelengths.

WHY IS THIS IMPORTANT?

These miniature loops:

- The ten times shorter and thinner than standard loops.
- Are abundant in number and occur across the solar surface.
- Appear to emit energy intermittently through magnetic reconnection. The presence suggests that numerous small-scale magnetic activities might collectively heat the corona. This idea supports the "nanoflare heating theory" proposed solar physicist Eugene Parker.





ನಮ್ಮ ಭವಿಷ್ಯ

IAS/KAS/ACF/PSI/VO/AO &AAO/RFO

- Photosphere
- Chromosphere
- Corona
- Convection Zone

Answer: B. Chromosphere

5. Extended Range Anti-Submarine Rocket

Why in news: Recently, user trials of Extended Range Anti-Submarine Rocket (ERASR) were successfully carried out from INS Kavaratti.

Q. With reference to the Extended Range Anti-Submarine Rocket (ERASR), consider the following statements:

- It is launched from Indigenous Rocket Launchers (IRLs) fitted on Indian naval ships.
- It uses an indigenously developed Electronic Time Fuze.
- It was jointly developed by DRDO and ISRO.

Which of the statements given above is/are correct?

- 1 only
- 1 and 2 only
- 2 and 3 only
- 1, 2 and 3

Answer: B) 1 and 2 only. Statement 3 is incorrect: ERASR was developed by DRDO's ARDE, with support from HEMRL and NSTL, not ISRO.)

6. Admiralty (Jurisdiction & Settlement of Maritime Claims) Act, 2017

Why in news: The Kerala High Court recently ordered the conditional "arrest" of Liberian container ship MSC Akiteta II, after the Kerala government filed an admiralty suit in the court under Section 4 of the Admiralty (Jurisdiction and Settlement of Maritime Claims) Act, 2017

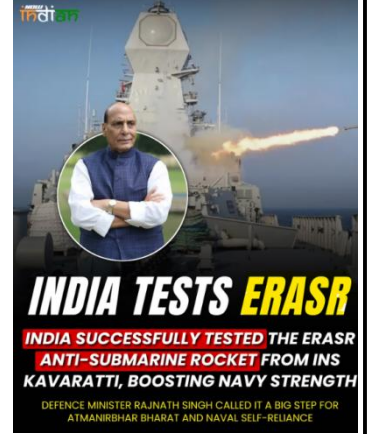
Q) With reference to the Admiralty (Jurisdiction & Settlement of Maritime Claims) Act, 2017, consider the following statements:

- The Act consolidates laws relating to admiralty jurisdiction and repeals several British-era statutes.
- The Act applies to all vessels, including inland vessels and warships.
- Admiralty jurisdiction has been conferred upon eight High Courts in India.

Which of the statements given above are correct?

- 1 and 3 only
- 2 and 3 only
- 1 and 2 only
- 1, 2 and 3

Answer: (a) 1 and 3 only



- Statement 2 → Incorrect (Act excludes inland vessels, warships, and vessels used for non-commercial purposes.)

11 July (Friday)

1. Great Hornbill
2. Magnetometer
3. Miniature Plasma Loops
4. Bulgaria
5. Accelerator Mass Spectrometry (AMS) Dating

1. Great Hornbill

Why in news: In a rare and remarkable sighting, the Malamuzhakki Vezhambal (Great Hornbill), Kerala's State bird, was spotted in the coastal belt of Kakkampara, near Ezhimala in Kannur, an area far from its usual forested habitats.

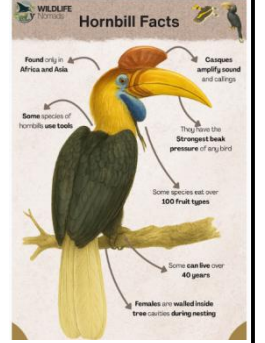
Q) With reference to the Great Hornbill (*Buceros bicornis*), consider the following statements:

1. It is primarily found in the Western Ghats and Himalayan forests.
2. Both male and female Great Hornbills have similar iris coloration.
3. It is listed as *Vulnerable* on the IUCN Red List.
4. It prefers nesting in tall trees above the canopy in wet evergreen forests.

Which of the statements given above are wrong?

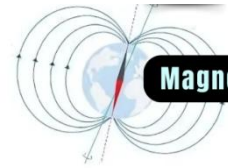
- (a) 1, 3 and 4 only
- (b) 1 and 2 only
- (c) 2 only
- (d) 1, 2, 3 and 4

Answer: (c) .Males → red irises, Females → white irises



2. Magnetometer

Why in news: Researchers at the Raman Research Institute (RRI), an autonomous institution of the Department of Science and Technology (DST), have devised a novel Raman-Driven Spin Noise Spectroscopy method for magnetometry in an all-optical quantum magnetometer that could address these challenges



Magnetometer

Q) With reference to magnetometers, consider the following statements:

1. A magnetometer is a passive instrument that measures changes in the Earth's magnetic field.
2. Optically Pumped Atomic Magnetometers (OPAMs) require sophisticated magnetic shielding for high sensitivity.
3. SERF magnetometers function effectively even in strong magnetic fields.

Which of the statements given above is/are Wrong?



ನಮ್ಮ ಭೋಷ್ಯೇಷ್

ನಮ್ಮ FORESIGHT

IAS/KAS/ACF/PSI/VO/AO &AAO/RFO

- A) 1 and 2 only
- B) 2 and 3 only
- C) 1 only
- D) 3 only

Answer: D) 3 only

3. Miniature Plasma Loops

Why in news: Astronomers at the Indian Institute of Astrophysics (IIA), and their collaborators used high-resolution imaging and spectroscopy to catch miniature plasma loops elusive structures in action



Q) With reference to miniature plasma loops recently observed by astronomers, consider the following statements:

1. They are typically 3,000–4,000 kilometers long and less than 100 kilometers wide.
2. They are part of the Sun's corona and are as easily observable as large coronal loops.
3. They provide insights into how magnetic energy is stored and released in the Sun's atmosphere.

Which of the statements given above is/are correct?

- A) 1 and 3 only
- B) 2 and 3 only
- C) 1 and 2 only
- D) 1, 2 and 3

Answer: A) 1 and 3 only. Statement 2 is incorrect: They are small, short-lived, and mostly unresolved by earlier telescopes.

4. Bulgaria

Why in news: European Union ministers gave the final green light for Bulgaria to adopt the euro on January 1, 2026, making it the single currency area's 21st member

Q) With reference to Bulgaria, consider the following statements:

1. The Rhodope Mountains lie along Bulgaria's border with Greece.
2. The Danube River forms Bulgaria's southern border.
3. Musala, located in the Rila Mountains, is the highest peak in Bulgaria.
4. Bulgaria will adopt the euro as its official currency in 2026.

Which of the statements given above are correct?

- (a) 1, 3 and 4 only
- (b) 1 and 2 only
- (c) 2 and 3 only
- (d) 1, 2, 3 and 4

Answer: (a)



IAS/KAS/ACF/PSI/VO/AO &AAO/RFO

Q) How many of the above-mentioned countries share a land border with Ukraine?

UPSC Civil Services Prelims 2023: General Studies
(SET – A – Held on 28 May)

1. Bulgaria
2. Czech Republic
3. Hungary
4. Latvia
5. Lithuania
6. Romania

Options:

1. Only two
2. Only three
3. Only four
4. Only five

Bulgaria: Does not share a direct border with Ukraine. It is located south of Romania and is separated from Ukraine by the Black Sea.

Answer(1) : Only two

5. Accelerator Mass Spectrometry (AMS) Dating

Why in news: The Tamil Nadu State Department of Archaeology (TNSDA) has dispatched 23 charcoal samples to the Beta Analytic laboratory in the United States for Accelerator Mass Spectrometry (AMS) dating

T.N. Archaeology Department sends 23 charcoal samples to U.S. for AMS dating

Official sources said the AMS test results are expected within two months. In addition to AMS, the TNSDA is also employing a suite of scientific methods to study the ancientness of various unearthed materials

Updated - July 08, 2023 04:04 pm IST - CHETANU

N. SAI CHARAN

READ LATER



Q) With reference to Accelerator Mass Spectrometry (AMS) dating, consider the following statements:

1. AMS dating measures the radioactive isotope values of Carbon-14 by accelerating ions to high kinetic energies and performing mass analysis.
2. It requires larger sample sizes compared to conventional radiocarbon dating methods.
3. Its applications are limited only to archaeological studies.

Which of the statements given above is/are correct?

- A) 1 only
- B) 1 and 2 only
- C) 2 and 3 only
- D) 1, 2 and 3

Answer: A) 1 only. Statement 2 is incorrect: AMS requires very small samples (20–500 mg), unlike conventional methods that need ~10 g.

Statement 3 is incorrect: AMS has multiple applications, including climate studies and biomedical research.



12 July (Saturday)

1. Lake Turkana
2. Laughing Dove
3. World Population Day 2025
4. TALASH Initiative

1. Lake Turkana

Why in news: Recently, scientists have extracted 18-20 million year-old enamel proteins from extinct mammal fossils from the Lake Basin.

Q) With reference to Lake Turkana, consider the following statements:

1. It is located entirely within Kenya.
2. It is fed primarily by the Omo River, which contributes nearly 90% of its water.
3. It is the world's largest permanent desert lake.

Which of the statements given above is/are correct?

- A) 1 and 2 only
- B) 2 and 3 only
- C) 1 and 3 only
- D) 1, 2 and 3

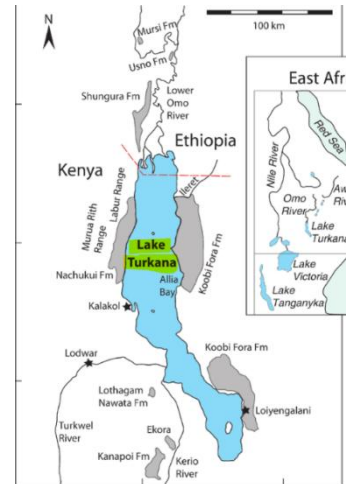
Answer: B) 2 and 3 only. It extends into Ethiopia, so Statement 1 is incorrect

- It is a UNESCO World Heritage Site and the world's largest permanent desert lake.

Q) Lake Turkana is situated in which major geological feature?

- A) Congo Basin
- B) East African Plateau
- C) Ethiopian Highlands
- D) Eastern Rift Valley

Answer: D) Eastern Rift Valley



2. Laughing Dove

Why in news: An uncommon, partially white small pigeon called a laughing dove was recently spotted in the Nagamalai hillock forest near Nambiyur in Erode.

- **The Laughing Dove (*Spilopelia senegalensis*)** is a small pigeon, also known as the laughing turtle dove, palm dove, Senegal dove, and in India, the little brown dove
- **IUCN Red List: 'Least Concern'**



3. World Population Day 2025

Why in news: This year's World Population Day took place on Friday, July 11, 2025, with the theme "Empowering young people to create the families they want in a fair and hopeful world".

Q) With reference to World Population Day (WPD), consider the following statements:

1. It was established in 1989 by the UNDP Governing Council.
2. It was inspired by the global interest during "Five Billion Day" marked in 1987.





ನಮ್ಮ ಪೂರೈಕೆ

ನಮ್ಮ FORESIGHT

IAS/KAS/ACF/PSI/VO/AO & AAO/RFO

3. The first observance of WPD took place in 1995.

Which of the statements given above is/are correct?

- A) 1 and 2 only
- B) 2 and 3 only
- C) 1 and 3 only
- D) 1, 2 and 3

Answer: A) 1 and 2 only. First observance was in **1990**, not 1995

- **Global Population Trends** - The global population stands at 8.2 billion (2025), with projections of 10.4 billion by the 2080s. India now has the largest population at 1.46 billion, surpassing China.

4. TALASH Initiative

Why in news: Recently, the National Education Society for Tribal Students (NESTS), an autonomous organization TALASH Initiative

Q) With reference to the TALASH Initiative recently launched in India, consider the following statements:

1. It is a national program aimed at the holistic development of tribal students studying in Eklavya Model Residential Schools (EMRSs).
2. It has been launched by the National Education Society for Tribal Students (NESTS) in collaboration with UNICEF India.
3. It is exclusively designed for teachers of tribal schools.

Which of the statements given above is/are correct?

- A) 1 and 2 only
- B) 2 and 3 only
- C) 1 and 3 only
- D) 1, 2 and 3

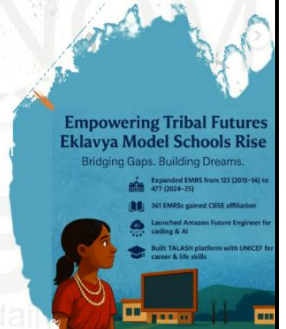
Answer: A) 1 and 2 only

Statement 3 is incorrect — the program is primarily for **students**, not exclusively for teacher

TALASH Initiative

WHY IN NEWS?

The **National Education Society for Tribal Students (NESTS)**, an autonomous organization under the **Union Ministry of Tribal Affairs** has launched the TALASH initiative.



ನಮ್ಮ ಪೂರೈಕೆ

14 July (Monday)

1. Akash Missile
2. Maratha Military Landscapes of India
3. Revisiting Eco-Sensitive Zones Guidelines
4. Operation Shiva

1. Akash Missile

Why in news: In a blow to India's defence export efforts, Brazil has reportedly halted negotiations with India to acquire the Akash missile system.

Q) Consider the following statements regarding the Akash Missile System:

1. It uses a liquid-fuel engine capable of reaching speeds of up to Mach 5.
2. The system can simultaneously engage multiple targets and includes ECCM (Electronic Counter-Countermeasure) features.

Which of the statements given above is/are wrong?

- A) 1 only
- B) 2 only
- C) Both 1 and 2
- D) Neither 1 nor 2

Answer: A) 1 only. Statement 1 is incorrect: Akash uses a **solid-fuel ramjet**, not a liquid-fuel engine, and achieves **Mach 2.5–3.5**



2. Maratha Military Landscapes of India

Why in news: Recently, 'Maratha Military Landscapes of India' got inscribed on the UNESCO World Heritage List, becoming India's 44th property to receive this recognition.

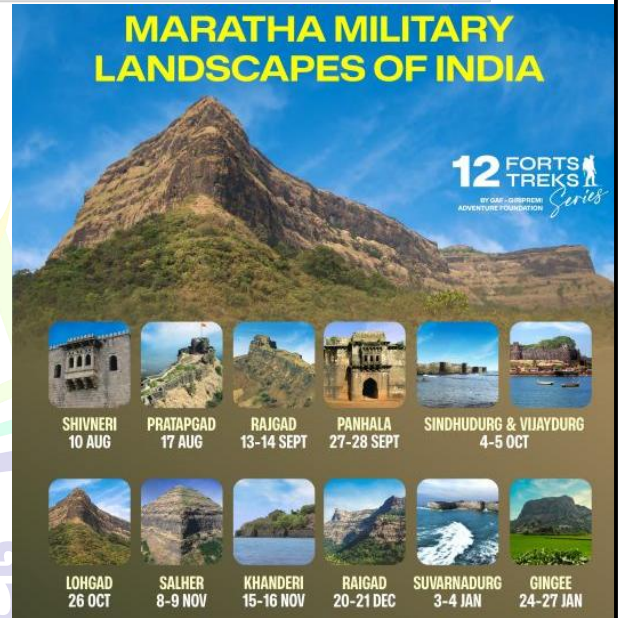
Q. With reference to the 'Maratha Military Landscapes of India', recently inscribed on the UNESCO World Heritage List consider the following statements:

1. All the forts included in this heritage property are located in the Deccan Plateau region.
2. Suvarnadurg and Khanderi are classified as island forts.
3. Pratapgad Fort is protected by the Archaeological Survey of India (ASI).
4. Gingee Fort in Tamil Nadu forms part of this World Heritage listing.

How many of the above statements are correct?

- A. Only one
- B. Only two
- C. Only three
- D. All four

Answer: B. Only two



Key Points

- **Raigad Fort** is one of the 12 forts nominated under the title "Maratha Military Landscapes of India" for **UNESCO World Heritage** status for the year **2024–25**.
- It was the **capital** of the Maratha Empire and the seat of **Chhatrapati Shivaji Maharaj**, the most illustrious Maratha sovereign. Shivaji Maharaj was formally coronated as the **Chhatrapati** at Raigad in **1674**.

- **Statement 1 – Incorrect:** The 12 forts are located in **Maharashtra and Tamil Nadu**, not only in the Deccan.
- **Statement 3 – Incorrect:** Pratapgad is maintained by the **Maharashtra State Archaeology Department**, not ASI.

- The fort is geographically unique, being surrounded by **valleys** shaped by the **Kal and Gandhari rivers**. It is an isolated massif without any direct connection to neighboring hills, making it a natural fortress and strategically advantageous.
- **Raigad Fort** is located in the **Sahyadri mountain range** in the state of **Maharashtra**, India.
- The fort is also known for its remarkable features, including the **Maha Darwaja** (main gate), the **Samadhi of Shivaji Maharaj**, and the **Jagdishwar Temple**.

3. Revisiting Eco-Sensitive Zones Guidelines

Why in news: The recent meeting of the Standing Committee of the National Board for Wildlife (SC-NBWL), chaired by the Union Environment Minister, resolved to revisit the 2011 guidelines on Eco Sensitive Zones (ESZs).

UPSC (Prelims) Exam GS Official Paper-I (Held On: 24 Aug 2014)

Q) With reference to "Eco-Sensitive Zones", which of the following statements is/are correct?

1. Eco-Sensitive Zones are the areas that are declared under the Wildlife (Protection) Act, 1972
2. The purpose of the declaration of Eco-Sensitive Zones is to prohibit all kinds of human activities in those zones except agriculture.

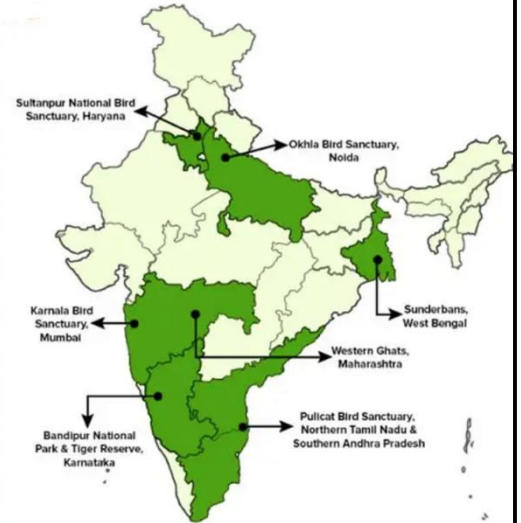
Select the correct answer using the code given below.

1. 1 only
2. 2 only
3. Both 1 and 2
4. Neither 1 nor 2

Answer Option 4: Neither 1 nor 2

- **Eco-sensitive zones** are ecologically Fragile Areas are areas within 10 km around protected areas to act as a buffer.
- They are notified under **section 3 of the Environment Protection Act 1986** by the **Ministry of Environment and Forest**. Hence statement 1 is incorrect.
- Certain activities are either banned or regulated to protect the environment.
- Agriculture, horticulture practices by local communities, organic farming, rainwater harvesting, scientific research, tourism, etc. are permitted in the Eco-sensitive zones. Hence statement 2 is also incorrect.
- They act as a shock absorber for protected areas and are a transition zone from high protection areas to lesser protection areas.
- They help in **in-situ conservation**.
- They minimize forest depletion and man-animal conflict.

Major Eco-sensitive Zones of India



4. Operation Shiva

Why in news: The Indian Army recently launched Operation Shiva as part of a multi-tier security setup to secure the ongoing Amarnath Yatra.

Q. Consider the following statements regarding Operation Shiva:

1. It is a security operation launched by the Indian Army to ensure the safe conduct of the Amarnath Yatra.
2. The operation deploys UAV surveillance, counter-terror grids, and electronic warfare systems for monitoring.
3. Operation Shiva is jointly conducted by the Indian Army and the Indian Navy.

Which of the statements given above is/are wrong?

- A. 1 only
- B. 1 and 2 only





ನಮ್ಮ ಪೂರ್ವೋಚ್ಛ

ನಮ್ಮ FORESIGHT

IAS/KAS/ACF/PSI/VO/AO &AAO/RFO

C. 3 only

D. 1, 2 and 3

Answer: C. 3 only tatement 3 is incorrect — The Indian Navy is *not* part of Operation Shiva.

15 July (Tuesday)

1. Nominated Members of Rajya Sabha
2. Carbon Credit Trading Scheme (CCTS)
3. Jarawa Tribe
4. Exercise Talisman Sabre 2025

1. Nominated Members of Rajya Sabha

Why in news: The issue of nominated members in Rajya Sabha has once again come into discussion due to historical references and ongoing debates over the rationale and constitutional mandate behind such nominations.

Q. With reference to the nominated members of the Rajya Sabha, consider the following statements:

1. The President nominates 12 members to the Rajya Sabha from among persons having special knowledge or practical experience in literature, science, art, and social service.
2. The Ministry of Parliamentary Affairs is responsible for processing and notifying all such nominations.
3. The Delhi High Court has ruled that sports can be considered a part of "art" for the purpose of nomination under Article 80(3).

Which of the statements given above is/are correct?

- A. 1 only
- B. 1 and 3 only
- C. 2 and 3 only
- D. 1, 2 and 3

Answer: B. 1 and 3 only

- **Article 80(1)(a):** Provides for nomination of 12 members to the Rajya Sabha by the President.
- **Article 80(3):** Specifies that the nominees must have special knowledge or practical experience in one or more of the following fields: Literature; Science; Art; Social service.

Composition of the Rajya Sabha:

- **Total Strength:** The current strength of the Rajya Sabha is **245** members, comprising:
 - **233 elected** members representing **States and Union Territories**
 - **12 nominated** members by the President
- **Permanent Nature:** The **Rajya Sabha is a permanent body** and is **not subject to dissolution**.
- **Biennial Retirement:** **One-third members** retire every two years, and elections are held to fill the vacant seats.

[UPSC 2014] Consider the following statements:

1. The Chairman and the Deputy Chairman of the Rajya Sabha are not the members of that House.
2. While the nominated members of the two Houses of the Parliament have no voting right in the presidential election, they have the right to vote in the election of the Vice President.

Which of the statements given above is/are correct?

Options: (a) 1 only (b) 2 only* (c) Both 1 and 2 (d) Neither 1 nor 2

2. Carbon Credit Trading Scheme (CCTS)

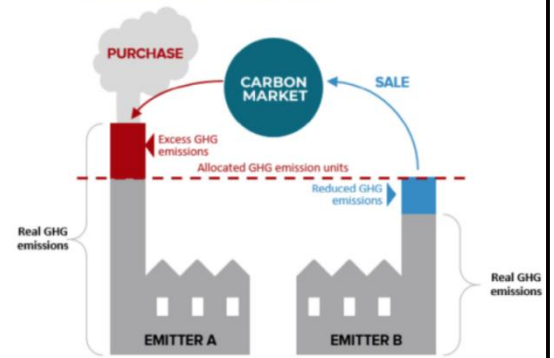
Why in news: The Indian government has announced greenhouse gas (GHG) emissions intensity targets for entities in eight key industrial sectors under the compliance mechanism of the Carbon Credit Trading Scheme (CCTS).

IAS/KAS/ACF/PSI/VO/AO &AAO/RFO

Q) The Carbon Credit Trading Scheme (CCTS) recently announced by the Indian government aims primarily to:

- Promote energy efficiency in all industrial sectors through Energy Saving Certificates (ESCs)
- Reduce greenhouse gas (GHG) emissions intensity in select high-emission industrial sectors through tradeable carbon credit certificates (CCCs)
- Impose mandatory carbon taxes on the power sector and heavy industries
- Encourage voluntary carbon offsetting projects by private companies

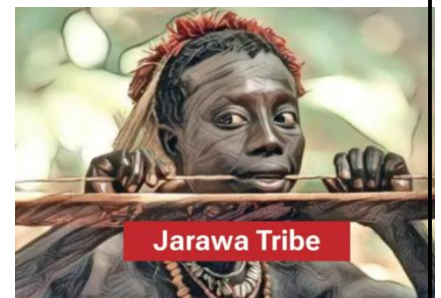
How an emission trading system works



Answer: B – Reduce greenhouse gas (GHG) emissions intensity in select high-emission industrial sectors through tradeable carbon credit certificates (CCCs).

3. Jarawa Tribe

Why in news: Concerns have been raised over the enumeration of the Jarawa Tribe in the upcoming 16th Census of India, especially considering their isolation, vulnerability, and the sensitive nature of contact.



Q) Consider the following statements regarding the Jarawa Tribe of the Andaman Islands:

- The Jarawas are classified as a **Particularly Vulnerable Tribal Group (PVTG)** and live in Middle and North Andaman Islands.
- They are believed to have descended from the extinct Jangil tribe and are considered part of the earliest human settlers in Asia.
- The Jarawas traditionally follow a sedentary lifestyle based on agriculture and permanent settlements.
- The 16th Census of India is expected to include caste enumeration and will cover the Andaman Islands in its first phase.

Which of the statements given above is/are correct?

- 1 and 2 only
- 2 and 3 only
- 1, 2, and 4 only
- 1, 2, 3, and 4

Answer: A) 1 and 2 only

- Statement 3:** Incorrect. Jarawas are **nomadic hunter-gatherers**, not sedentary agriculturalists.
- Statement 4:** Incorrect. The 16th Census **will not enumerate caste in the Andaman Islands**, and tribal enumeration there is sensitive due to their isolated status.



4. Exercise Talisman Sabre 2025

Why in news: India, along with 18 other nations, is participating in **Talisman Sabre 2025**, a major bilateral military drill led by Australia that commenced recently.

16and 17 July (Wednesday and Thursday)

1. Klyuchevskoy Volcano
2. Decarbonising Global Shipping
3. Kaziranga National Park
4. Behdeinkhlam Festival
5. Swachh Survekshan Award
6. Tanimbar Islands

1. Klyuchevskoy Volcano

Why in news: A false-color satellite photo from 2023 shows a devilish pair of lava flows and an enormous plume of smoke spewing from Klyuchevskoy, the tallest volcano in Europe and Asia.



Q) Consider the following statements about the Klyuchevskoy Volcano:

1. Klyuchevskoy is an active **stratovolcano** located on the **Kamchatka Peninsula in Russia**.
2. It is **the tallest active volcano** in the entire Eurasian continent.
3. It has a simple conical structure with only one central crater and no lateral vents.
4. It has erupted more than 50 times since 1700 and is continuously monitored by the Kamchatka Volcanological Station.

Options:

- A. only one statement is correct
- B. only 2 statements are correct
- C. only 3 statements are correct
- D. None of the statements are correct

Answer: C) only 3 statements are correct (1, 2, and 4 only). Statement 3 — Incorrect:. It does **not** have a simple structure. It has a **truncated cone** and around **70 lateral craters**.

2. Decarbonising Global Shipping

Why in news: Global shipping aims for decarbonisation by 2040– 50, shifting from Very Low Sulphur Fuel Oil (VLSFO), diesel and LNG to **green fuels like green ammonia, emethanol, and biofuels**.



Q) With reference to decarbonisation of global shipping, consider the following statements:

IAS/KAS/ACF/PSI/VO/AO &AAO/RFO

1. Global shipping aims to shift from VLSFO and LNG to green fuels like green methanol and green ammonia by **2040–50**.
2. Green methanol is preferred over green ammonia because it is cheaper and requires significantly less electricity to produce.
3. **Green ammonia** is avoided mainly due to its high toxicity and difficult engine compatibility.

Which of the statements given above are correct?

- A) 1 only
- B) 1 and 3 only
- C) 2 and 3 only
- D) 1, 2, and 3

Green Methanol's Advantage -Green methanol is preferred over ammonia due to **ease of engine compatibility**, though it is costlier due to high electricity and electrolyser demands.

Answer: B) 1 and 3 only. Statement 2 is **incorrect** → Green methanol is *costlier* due to high electricity and electrolyser requirements.

3. Kaziranga National Park

Why in news: Kaziranga National Park and Tiger Reserve has released its **first Grassland Bird Survey Report**, highlighting critical habitats and threatened species in the Brahmaputra floodplains.

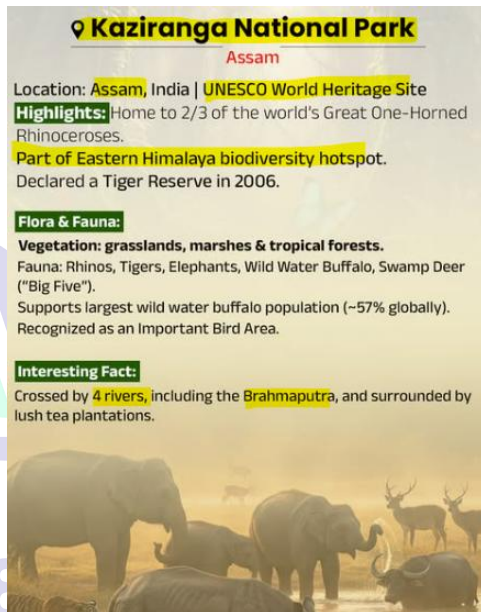
Q) With reference to Kaziranga National Park, consider the following statements:

1. It is located in **Andra Pradesh** and is part of the Godavari floodplain ecosystem.
2. The park is home to **the world's largest population of one-horned rhinoceroses**.

Which of the statements given above is/are correct?

- A) 1 only
- B) Both the statements are correct
- C) None of the statements are correct
- D) 2 only

Answer: D) 2 only. **Statement 1 — Incorrect:** Kaziranga National Park is located in **Assam**, It is, however, part of the **Brahmaputra Valley floodplain**



4. Behdeinkhlam Festival

Why in news: The sacred Behdeinkhlam Festival was celebrated with fervor in Jowai, Meghalaya, blending **ancient Pnar rituals** with modern social themes.

Q) Behdeinkhlam Festival, consider the following statements:

1. It is a major festival of the **Pnar community** of Meghalaya and is celebrated after the harvest season.





ನಮ್ಮ ಭೋಜನ

ನಮ್ಮ FORESIGHT

IAS/KAS/ACF/PSI/VO/AO & AAO/RFO

2. The festival involves rituals intended to drive away diseases and evil spirits.
3. The traditional game *dad-lawakor*, similar to football, is played on the final day of the festival.
4. The festival is centered around polished tree trunks known as **Dein Khlam** and **Khlong**.

Which of the statements given above are correct?

- A) 1, 2, and 3 only
- B) 2, 3, and 4 only
- C) 1, 3, and 4 only
- D) 1, 2, 3, and 4

Answer: B) 2, 3, and 4 only

Behdeinkhlam Festival: Cultural Significance

- Behdeinkhlam, meaning “driving away the plague,” is a major cultural festival of the **Pnar community in Meghalaya**, celebrated annually in **July** after sowing.

5. Grandala

Why in news: A Rare 'Grandala' electric-blue bird was recently spotted in Sainj Valley, Himachal Pradesh.

About Grandala

- It is a species of bird in the thrush family Turdidae.
- Scientific Name: *Grandala coelicolor*
- It is the only species placed in the genus *Grandala*.
- It is an arboreal insectivore



6. Tanimbar Islands

Why in news: Recently, an earthquake of magnitude 6.7 struck off the coast of Indonesia's Tanimbar Islands region

Q) Consider the following statements regarding the Tanimbar Islands:

1. They are part of **the Indonesian province of Maluku**.
2. The largest island in the group is **Yamdena**.
3. The islands lie between the Banda Sea and the Arafura Sea.
4. They are part of the Pacific Ring of Fire and experience seismic activity.

Which of the statements given above are correct?

Options:

- A. 1, 2 and 3 only
- B. 1, 2 and 4 only
- C. 2, 3 and 4 only
- D. All of the above

Answer: D. All of the above

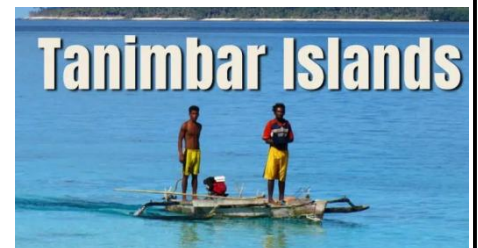
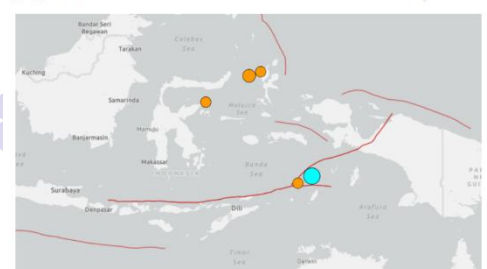
Magnitude 6.7 earthquake strikes Indonesia's Tanimbar Islands region, geophysics agency says

6.7 magnitude earthquake strikes off Indonesia's coast, no damage reported, tremors felt in eastern towns, no tsunami potential

Updated: July 16, 2020 01:20 pm IST

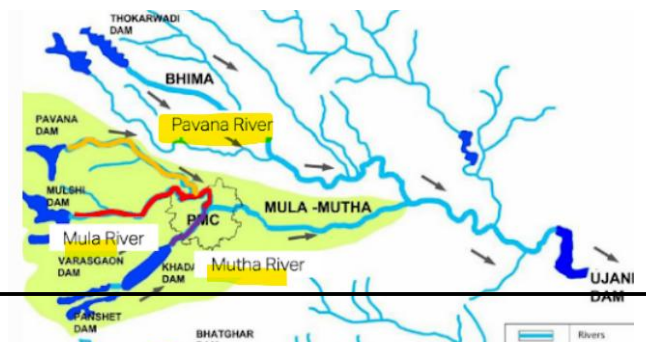
REUTERS

READ LATER



18 July (Friday)

1. **Pavana River**
2. **Cheetah Translocation**
3. **Tandem Solar Cells**



1. Pavana River

Why in news: Citizens in Pune district are protesting the Pavana River Rejuvenation Project, raising concerns about environmental degradation and mismanagement.

Q) With reference to the **Pavana River** in Maharashtra, consider the wrong statements:

1. It originates near **Lonavala** in the Western Ghats.
2. It flows eastward and southward before joining the **Mula River near Pune**.
3. Pavana Nagar Dam on the river is an earth-fill gravity dam supplying drinking water to urban areas.
4. The Pavana River is a part of the Krishna River basin through the **Mula–Mutha–Bhima system**.

Options:

- A. only one statement is Wrong
- B. only 2 statements are Wrong
- C. only 3 statements are Wrong
- D. None of the statements are Wrong

Answer: D. None of the statements are Wrong

- The Pavana → Mula → Mula-Mutha → Bhima → Krishna river sequence makes it part of the Krishna basin

2. Cheetah Translocation

Why in news: Gujarat's Banni Grassland is set to receive cheetahs by the end of 2025. Prey density has been increased, and an enclosure has been created.

Gujarat's Banni Grasslands ready to host cheetahs, say officials

Mr. Singh said a 600-hectare enclosure has been developed, the herbivore population has been increased, and facilities such as CCTV monitoring and a dedicated veterinary centre have been established

PTI
READ LATER

Q. Consider the following statements regarding **Banni Grasslands Reserve**:

1. It is **Asia's largest tropical freshwater** grassland ecosystem.
2. It was identified by the Wildlife Institute of India as a potential

site for cheetah reintroduction.

3. It is legally classified as a protected forest.

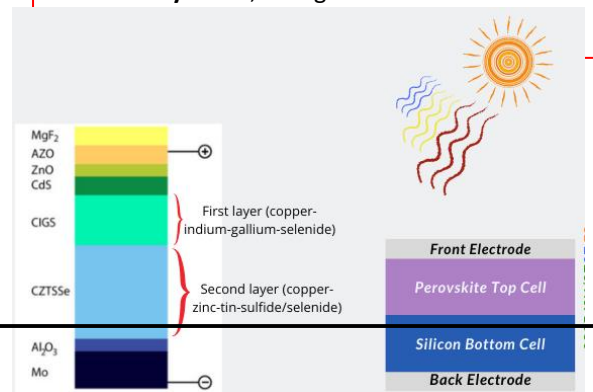
Which of the statements given above are correct?

- A. 2 and 3 only
- B. 1 and 2 only
- C. 1 and 3 only
- D. 1, 2 and 3

Answer: A. 2 and 3 only. Statement 1 is wrong — Banni is arid not freshwater.



- The **Wildlife Institute of India (WII)** has identified this grassland reserve as **one of the last remaining habitats of the cheetah in India** and a potential **reintroduction site** for the species.
- The word "**Banni**" comes from the Hindi word *banai*, meaning *made*. The land here was **formed from sediments deposited by the Indus and other rivers over thousands of years**.
- It was first declared a "**protected forest**" in **May 1955**, using the nomenclature of



3. Tandem Solar Cells

Why in news: NCPRE's advancement in Silicon–Perovskite Tandem Solar Cells offers a leap in solar efficiency and affordability for India.

Q) Tandem Solar Cells, consider the following statements:

1. Tandem solar cells minimize both thermalization and transmission losses by using layers with different bandgaps.
2. Perovskite is typically used as the bottom layer due to its ability to absorb low-energy photons.
3. These cells have demonstrated over 33% efficiency in laboratory conditions.
4. Tandem solar cells are suited for space and concentrated photovoltaic (CPV) applications.

Which of the statements given above are correct?

- A. Only one statement is correct
- B. Only two statements are correct
- C. Only three statements are correct
- D. All the statements are correct

Tandem cells (TSCs) are defined as a configuration of multiple solar cells with different **bandgaps** connected in series, designed to absorb a broader range of the solar spectrum and achieve higher efficiencies than single-junction cells.

Answer: C. Only three statements are correct. Statement 2 – Incorrect: In the most common tandem design, **perovskite is used as the top layer**, absorbing *high-energy* photons

19 July (Saturday)

1. Polavaram Banakacherla Link Project (PBLP)
2. Bolivia
3. SIMBEX Exercise

1. Polavaram Banakacherla Link Project (PBLP)

Why in news: Centre has decided to constitute a high-level technical committee to examine concerns around pending inter-state water issues **between Telangana and Andhra Pradesh.**

Q) Polavaram–Banakacherla Link Project (PBLP) and related inter-state water governance, consider the following statements:

1. The Polavaram Project is located on the **Godavari River** and facilitates inter-basin transfer of water to the Krishna basin.
2. The project aims to **provide irrigation, hydropower, drinking water, and drought-relief** benefits to the Rayalaseema region.
3. **Article 262** of the Constitution empowers the Supreme Court to adjudicate inter-state river disputes in consultation



- **Full Form :** Polavaram–Banakacherla Link Project
- **Goal :** **Divert 200 TMC of Godavari floodwaters** to dry regions in Rayalaseema (AP).
- **Route:**
Polavaram Dam → Prakasam Barrage → Bollapalli Reservoir → Tunnel through Nallamala forest → Banakacherla Reservoir
- **Why Important?**
 - Irrigation in drought areas
 - Drinking water supply
 - Boost agriculture in southern Andhra

IAS/KAS/ACF/PSI/VO/AO &AAO/RFO

with the River Boards Act, 1956.

4. Under the **Inter-State River Water Disputes Act, 1956**, tribunals may be established to resolve disputes between states.

Which of the statements given above are wrong?

- A. 1, 2 and 4 only
B. 1 only
C. 3 only
D. 1, 2, 3 and 4

Answer: C. 3 only. Article 262 actually allows Parliament to bar the jurisdiction of the Supreme Court, not empower it to adjudicate disputes.

How Are Inter-State Water Disputes Resolved?

- **Article 262:** Lets Parliament handle river water disputes.
- **River Boards Act (1956):** For joint river management (never implemented).
- **Inter-State Water Disputes Act (1956):**
 - States talk first
 - If unresolved → Tribuna
 - Tribunal award = Final & binding
 - **Supreme Court Involvement:** Allowed only in related cases (e.g., Mahadayi 2018)

2. Bolivia

Why in news: India has sent 3 Lakh Measles-Rubella Vaccine Doses to Bolivia Amid Outbreak

Q) With reference to the **Plurinational State of Bolivia**, consider the following pairs of countries and the direction in which they border Bolivia:

Country	Direction
1. Brazil	North and East
2. Paraguay	Southwest
3. Peru	Northwest
4. Argentina	South

Which of the pairs given above are correctly matched?

- A. 1, 3 and 4 only
B. 2 and 4 only
C. 1 and 3 only
D. 1, 2, 3 and 4

Answer: A. 1, 3 and 4 only





ನಮ್ಮ ಭೋರ್ವೈಟ್

ನಮ್ಮ FORESIGHT

IAS/KAS/ACF/PSI/VO/AO &AAO/RFO

3. SIMBEX Exercise

Why in news: Indian Navy to participate in 32nd Singapore India Maritime Bilateral Exercise (SIMBEX) exercise in Singapore.



Q2. Which of the following statements is/are correct regarding the history of SI MBEX?

1. It began as Exercise Lion King in 1994.
2. It was initially a joint exercise between the Indian Navy and the Indian Air Force.
3. It is one of India's longest uninterrupted bilateral maritime exercises.

- A. 1 and 2 only
- B. 1 and 3 only
- C. 2 and 3 only
- D. All of the above

Answer: B. 1 and 3 only. **Statement 2 wrong.** SIMBEX is a **maritime exercise**, conducted between the **Indian Navy** and the **Republic of Singapore Navy**, not the Air Force.

- **SIMBEX (Singapore India Maritime Bilateral Exercise)** held annually between the Indian Navy and Republic of Singapore Navy (RSN).

21 July (Monday)

1. POSH Act
2. Monkey Puzzle Butterfly
3. Bitra Island
4. Gangaikonda Cholapuram & Gangaikonda
5. Raji Tribe

1. POSH Act

Why in news: The Odisha government is fast-tracking the implementation of the POSH Act, 2013, which seeks to prevent and redress sexual harassment of women at workplaces.

POSH Act
Sexual Harassment
of Women
at Workplace Act



Q) Consider the following statements regarding the POSH Act, 2013:

1. It is applicable to all workplaces, including **government, private, NGOs, and informal sectors**.
2. Workplaces with **more than 10 employees** must constitute an Internal Committee; Local Committees are set up by district officers for smaller workplaces.
3. The Act ensures confidential complaint procedures, protection from retaliation, and strict penalties for offenders.

Which of the statements given above is/are correct?

- A. 1 and 2 only
- B. 2 and 3 only
- C. 1 and 3 only
- D. All of the above



ನಮ್ಮ ಪೂರೈಕೆ

ನಮ್ಮ FORESIGHT

IAS/KAS/ACF/PSI/VO/AO & AAO/RFO

Answer: D. All of the above

2. Monkey Puzzle Butterfly

Why in news: The Monkey Puzzle Butterfly (Rathinda amor) has been recorded for the first time in Central India, specifically within the **Pench Tiger Reserve (PTR)**

- **Distribution-** Endemic to South Asia, it is found in the Western Ghats, southern Indian plains, Bangladesh, and Sri Lanka
- **Pench Tiger Reserve** located in **Seoni district** and Chhindwara district of **Madhya Pradesh** and **Nagpur district of Maharashtra**. It gets its name from the **Pench River** that flows 74 km (46 mi) north to south through the reserve.

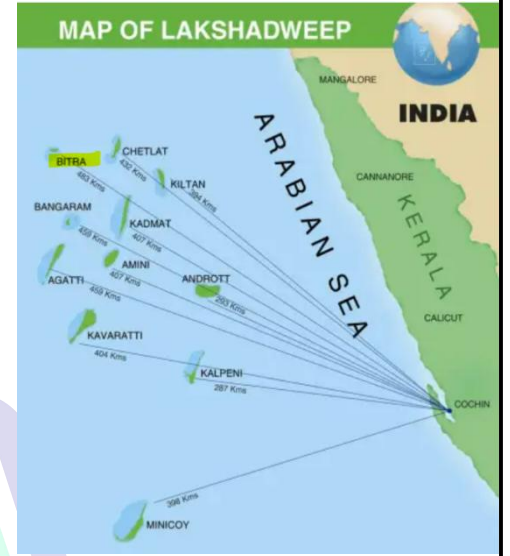


3. Bitra Island

Why in news: The Lakshadweep administration is considering the acquisition of Bitra Island for defence purposes, potentially making it the third island in the archipelago to host a defence establishment after Kavaratti (INS Dweeprakashak) and Minicoy (INS Jatayu).

Q) Consider the following statements regarding Bitra Island in Lakshadweep:

1. Bitra Island is the smallest inhabited island in Lakshadweep.
2. It is located in southern Lakshadweep near Minicoy.
3. The island is culturally significant due to a shrine dedicated to Arab saint Malik Mulla.
4. Bitra Island has ecological importance as a breeding ground for sea birds.



Which of the statements given above are Wrong?

- A. 1 and 2 only
- B. 3 only
- C. 2 only
- D. All of the above

ನಮ್ಮ ಪೂರೈಕೆ

Answer: C. 2only. Bitra Island is actually located in **northern Lakshadweep**, not the south.

- Minicoy is in the **southernmost part of Lakshadweep**, whereas Bitra is far to the north.

4. Gangaikonda Cholapuram & Gangaikonda

Why in news: Gangaikonda Cholapuram, in Tamil Nadu's Ariyalur district, was built by Rajendra Chola I after his victorious northern campaign, establishing it as the Chola capital (1025–1279 CE).

Q) Consider the following statements regarding Gangaikonda Cholapuram:

1. It was established as the **Chola capital** by **Rajendra Chola I** after his victorious northern expedition.



IAS/KAS/ACF/PSI/VO/AO &AAO/RFO

- The Gangaikonda Cholivaram Temple located here is part of the **UNESCO-listed** Great Living Chola Temples.
- The city was built by **Rajaraja Chola I** to commemorate his victory over the Pala king Mahipala.
- The **Chola Gangam lake** was created using water brought from the Ganga as a symbol of imperial power.

Which of the statements given above are Wrong?

- Only one statement is wrong
- Only two statements are wrong
- Only three statements are wrong
- All the statements are wrong

Answer: A. 1) Only one statement is wrong (3). The city was built by **Rajendra Chola I** to commemorate his victory over the Pala king Mahipala."

5. Raji Tribe

Why in news: A recent report from **Khetar Kanyal village in Uttarakhand's** Pithoragarh district highlights the absence of female leadership, exposing deeper social challenges in the Raji tribe—one of India's smallest and most isolated tribal groups.



- Location & Classification-** Primarily found in Uttarakhand and parts of western Nepal, they are classified as a Particularly Vulnerable Tribal Group (PVTG).

22 July (Tuesday)

- Slovenia
- Pale-Capped Pigeon
- Tuvalu Island
- Rajendra Chola I
- Shettihalli Wildlife Sanctuary

1. Slovenia

Why in news: Slovenia has become one of the few countries to legalize assisted dying for terminally ill adults, marking a major shift in the country's ethical and healthcare policy landscape.

Q) Consider the following statements about Slovenia:

- Slovenia **shares land borders** with Austria, Hungary, **Poland**, and Croatia.
- Mount Triglav, located in the Alpine region, is the **highest peak in Slovenia**.
- Slovenia has a long coastline on the Adriatic Sea extending more than 500 km.
- Major rivers** such as the Drava and Sava flow through the country.



Which of the statements given above are Wrong?



ನಮ್ಮ ಭವಿಷ್ಯ

ನಮ್ಮ FORESIGHT

IAS/KAS/ACF/PSI/VO/AO & AAO/RFO

- A. Only one statement is wrong
- B. Only two statements are wrong
- C. Only three statements are wrong
- D. All the statements are wrong

Answer: B. Only two statements are wrong (1 and 3). Slovenia does **not** have a long coastline. It has a **very short coastline** of about **46 km** on the Adriatic Sea. Therefore, the claim of a coastline over **500 km** is incorrect.

2. Pale-Capped Pigeon

Why in news: The elusive Pale-capped Pigeon was recently spotted and photographed in Dehing Patkai National Park, Assam, marking a rare and significant sighting for conservationists and bird enthusiasts.

- **Habitat & Distribution-** This frugivorous species inhabits evergreen forests, bamboo thickets, and nearby agricultural fields across India, Bangladesh, Myanmar, and Southeast Asia, up to elevations of 1,600 m.



3. Tuvalu Island

Why in news: Over 5,000 people have applied for a first-of-its kind migration visa from Tuvalu, offering an escape from rising climate threats due to sea-level rise.

Q) Consider the following statements about Tuvalu:

1. Tuvalu consists of **five low-lying islands**, with no point rising above 4.5 metres above sea level.
2. It has no permanent rivers due to its coral atoll geography.
3. Tuvalu is an independent parliamentary democracy under a constitutional monarchy with the British monarch as the Head of State
4. Funafuti is both the capital and the most populated atoll of Tuvalu.
5. Tuvalu's economy relies mainly on tourism and oil exports.

Map of Tuvalu



Which of the statements given above are correct?

- A. 2, 3 and 4 only
- B. 1, 2 and 3 only
- C. 2, 3 and 5 only
- D. 1, 4 and 5 only

Answer: A. 2, 3 and 4 only. Tuvalu is a group of **nine low-lying islands** in the west-central Pacific.

4. Rajendra Chola I

Why in news: The Prime Minister is expected to attend an event in Tamil Nadu marking 1000 years since Rajendra Chola I's conquest of the Gangetic plains, a significant milestone in Indian military and cultural history.



IAS/KAS/ACF/PSI/VO/AO & AAO/RFO

Q) With reference to Rajendra Chola I, consider the following statements:

1. He earned the title **Gangaikonda Cholan** after his successful campaign in the Gangetic plains.
2. He led one of the earliest recorded Indian overseas military expeditions, targeting regions such as Srivijaya.
3. He shifted the Chola capital to Gangaikondacholapuram and built a temple there to commemorate his northern campaign.
4. He strictly patronized Shaivism and discouraged the spread of Buddhism in his empire.

How many of the above statements are correct?

- a) Only one
- b) Only two
- c) Only three
- d) All four

Answer: c) Only three. Statement 4 – Incorrect: Although a Shaivite, he patronized Buddhism; he did not discourage it.

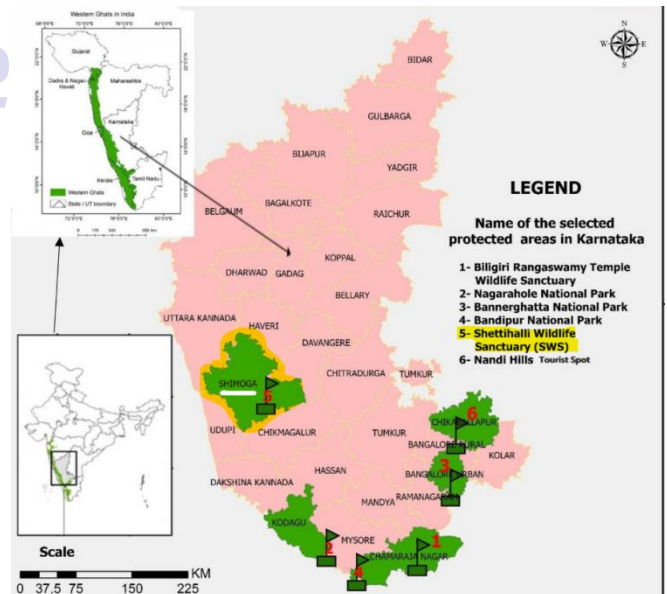
- **Additional Information**
- **Rajendra Chola I**, often referred to as Rajendra the Great, and also known as **Gangaikonda Chola** and **Kadararm Kondan**, was a Chola Emperor who reigned between **1014 and 1044 CE**.
- Rajendra had ascended the throne in **1014 CE**, around the age of 43.
- **Rajaraja I** was succeeded by his son **Rajendra Chola** in **1014 CE**.
- He expanded his empire by completing the conquest of Sri Lanka which his father had begun.
- The **Chola Dynasty** was a **Tamil thalassocratic empire** of southern India and one of the **longest-ruling dynasties** in world history.
- **Virarajendra Chola** was a significant Chola ruler who reigned from **1063–1070 AD**. He was the younger brother of **Rajendra Chola II** and **Rajadhiraja**. **Vijayalaya Chola** was a king of South India who founded the imperial Chola Empire. He ruled over the region to the north of the river Kaveri. **Gandaraditha Chola** succeeded his father **Parantaka I** and became the Chola king about 955 CE. He was also a **Tamil literary poet** in the **Thiruvaisippa Palandu**.

4. Shettihalli Wildlife Sanctuary

Why in news: The Karnataka government has allegedly violated the **Wildlife (Protection) Act, 1972** and Supreme Court orders by approving the denotification of 300 sq km of **Shettihalli Wildlife Sanctuary**, without ensuring compensatory measures. The National Board for Wildlife (NBWL) did not object.

Q) With reference to the Tunga Anicut (Shettihalli) Wildlife Sanctuary, consider the following statements:

1. It is located in **Karnataka's Tumkur district** and includes the Mandagadde Bird Sanctuary within its limits.
2. The sanctuary is dominated exclusively by dry deciduous forests.
3. The Tunga River flows near the sanctuary, supporting species such as otters and various migratory birds.
4. Tigers and elephants are among the major fauna found in this sanctuary.



How many of the above statements are correct?

- Only one
- Only two
- Only three
- All four

Answer: b) Only two (3and4). **Statement 2 – Incorrect:** The sanctuary has *dry deciduous, moist deciduous, and semi-evergreen* forests, not exclusively dry deciduous.

23 July (Wednesday)

- Lesotho
- Hatti Tribe
- Bharat NCX 2025
- AdFalcivax

1. Lesotho

Why in news: India and Lesotho are deepening bilateral ties following the Indian Minister of State for External Affairs' visit.

Q) Consider the following statements regarding Lesotho:

- Lesotho is completely surrounded by Namibia and is known for its low-lying desert terrain.
- The highest peak in **Lesotho is Thabana Ntlenyana**, which lies above 3,000 meters in elevation.



Which of the statements given above is/are correct?

Options:

- 1 only
- 2 only
- Both the statements are correct
- None of the statements are correct

Answer: B. 2 only. **Statement 1:** Incorrect – Lesotho is completely surrounded by **South Africa**, not Namibia. Additionally, it is a mountainous country, not low-lying desert terrain.

2. Hatti Tribe

Why in news: A polyandrous marriage by **Hatti tribe** members in **Himachal Pradesh** recently drew attention to their cultural tradition

Q) They are divided into two clans—Trans Giri in Himachal Pradesh and Jaunsar-Bawar in Uttarakhand. Consider the following statements regarding the Hatti Tribe:

- The Hatti tribe derives its name from traditional weekly markets known as *haats*.
- They are divided into two clans—Trans Giri in Himachal Pradesh and Jaunsar-Bawar in Uttarakhand.



Tribes in India Practising POLYANDRY	
Tribes	Region
Toda	Nilgiri Hills, Tamil Nadu
Khasa	Uttarakhand (especially Jaunsar Bawar region)
Hatti	Himachal Pradesh (Sirmaur, Trans-Giri region)
Khasi	Meghalaya
Ladani Bots	Northern India (exact locality not well defined)
Nayar	Kerala (historically, in matrilineal setup)

IAS/KAS/ACF/PSI/VO/AO & AAO/RFO

3. Their traditional governance system is known as *Khumbli*.
4. Both Trans Gori and Jaunsar-Bawar regions were granted Scheduled Tribe (ST) status simultaneously in 2023.

How many of the above statements are wrong?

- Only one
- Only two
- Only three
- All four

Origin -Named after 'haats' (markets), **Hattis wear white headgear** during ceremonies and follow customs like polyandry and khumbli (community council)

Answer: a) Only one. Statement 4 – Incorrect: Only Trans Gori (Himachal) got ST status in 2023; Jaunsar-Bawar received it earlier in 1967.

3. Bharat NCX 2025

Why in news: Bharat NCX 2025, India's premier National Cybersecurity Exercise, was officially inaugurated to boost cyber preparedness.

Q) Which of the statements given below is/are correct consider the following statements regarding **Bharat NCX 2025**:

1. It is India's premier **National Cybersecurity Exercise** aimed at enhancing national cyber resilience.
2. The exercise is organized solely by the **Ministry of Electronics and Information Technology** (MeitY).
3. Key features include live-fire cyber simulations and AI-integrated cybersecurity training.

- 1 only
- 1 and 2 only
- 1 and 3 only
- 1, 2 and 3

Answer: (c) 1 and 3 only. Statement 2 is incorrect: The exercise is conducted by the **National Security Council Secretariat (NSCS)** in collaboration with Rashtriya Raksha University (RRU), not solely by MeitY.

5. AdFalcivax

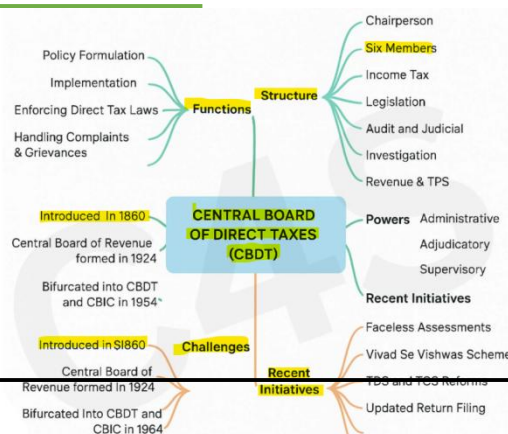
Why in news: ICMR is developing AdFalcivax, a next-generation malaria vaccine to target *Plasmodium falciparum*.

- It is a recombinant chimeric vaccine developed using **Lactococcus lactis**, a safe, food-grade bacterium.
- AdFalcivax targets both the **pre-erythrocytic and sexual stages of *Plasmodium falciparum***, providing dual-stage protection



24 and 25 July (Thursday and Friday)

1. **Central Board of Direct Taxes (CBDT)**
2. **Sea Slugs**
3. **Chola Gangam**
4. **Kanniyakumari Wildlife Sanctuary**
5. **MiG-21 Fighter Jet**



IAS/KAS/ACF/PSI/VO/AO & AAO/RFO

intensified its crackdown on tax evasion by leveraging data analytics and artificial intelligence (AI) to detect income reporting discrepancies more effectively.

Q) With reference to the Central Board of Direct Taxes (CBDT), consider the following statements:

1. It is a **statutory body** constituted under the Income Tax Act, 1961.
2. CBDT deals with both **direct and indirect taxes**.
3. The CBDT functions under the **Ministry of Finance and is responsible** for policy formulation related to direct taxes.
4. The members of CBDT are drawn from the Indian Revenue Service.

Which of the above statements is/are Wrong?

Options:

- A. Only one statement is correct
- B. Only 2 statements are correct
- C. Only 3 statements are correct
- D. All the statements are correct

Answer: A. Only one statement is correct. Statement 1: Incorrect CBDT is a statutory body **constituted under the Central Board of Revenue Act, 1963**, not the Income Tax Act, 1961.

2. Sea Slugs

Why in news: Scientists have identified two new species of wart sea slugs—**Phyllidia ovata** and **Phyllidia fontjei**—off the coast of **North Sulawesi, Indonesia**

- **Habitat:** Sea slugs, or nudibranchs, are soft-bodied marine molluscs (Phylum Mollusca, Class Gastropoda) found from shallow waters to deep seas, particularly around coral reefs.



3. Chola Gangam

Why in news: On the birth anniversary of Rajendra Chola I, the Tamil Nadu Chief Minister announced plans to develop the historic **Chola Gangam Lake**, also known as Ponneri Lake, located near Gangaikonda Cholapuram in **Ariyalur District**.

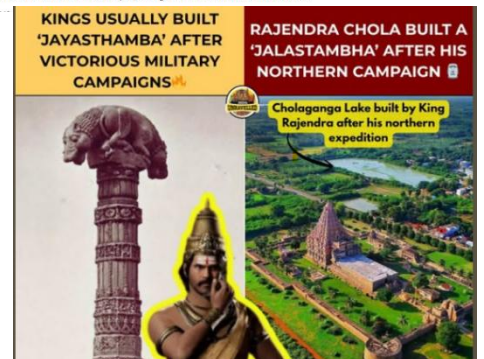
Chola Gangam lake, a 1000-year-old symbol of Rajendra Chola's victory, lies in ruins in Ariyalur

Premium

Near Brihadesvara Temple in Ariyalur district of Tamil Nadu lies Chola Gangam, a tank spread over 17 km. It had once occupied 16 miles. Prime Minister Narendra Modi's proposed visit on July 27 and the plan to release a commemorative coin will likely spotlight the condition of the tank

Q. With reference to the historic Chola Gangam Lake, consider the following statements:

1. It was constructed by **Rajaraja I** to celebrate the completion of the Brihadeeswarar Temple.
2. The **Tiruvalangadu Copper Plates** provide evidence of the lake's construction.
3. A canal system from the Kollidam River was built to supply water to the lake.
4. The lake historically served both irrigation and drinking water purposes.



According to the **Tiruvalangadu Copper Plates**, at the end of his military expedition, King **Rajendra Chola** erected a 'liquid pillar of victory' (ganga-jalamayam jayastambham) in his capital with the waters of the Ganga in the form of the lake Cholaganga.

IAS/KAS/ACF/PSI/VO/AO &AAO/RFO

Which of the above statements are correct?

- A. 1 and 2 only
- B. 2, 3 and 4 only
- C. 1, 3 and 4 only
- D. All the statements are correct

Answer: B. 2, 3 and 4 only. Statement 1 – Incorrect. The lake was dug by **Rajendra Chola I**, not **Rajaraja I**. It commemorated **Rajendra's northern military campaign**, not a temple construction.

4. Kanniyakumari Wildlife Sanctuary

Why in news: A research scholar recently documented around 450 species of moths in the Kanniyakumari Wildlife Sanctuary, highlighting its rich insect biodiversity.

Q. Kanniyakumari Wildlife Sanctuary, consider the following statements:

- 1. It is located at India's southernmost tip, where three **major water bodies**—the Arabian Sea, Bay of Bengal, and Indian Ocean—meet.
- 2. It shares its northern boundary with the **Kalakkad-Mundanthurai Tiger Reserve**.
- 3. No major rivers originate from this region due to its coastal geography.
- 4. The sanctuary is home to species such as the **Nilgiri Tahr** and the **Lion-tailed Macaque**.

Which of the above statements are correct?

- A. 1 and 2 only
- B. 2, 3 and 4 only
- C. 1, 2 and 4 only
- D. All the statements are correct

Answer: C. 1, 2 and 4 only. Statement 3 – Incorrect Despite its coastal location, **seven rivers** originate from this hilly region, including the **Pahrli** and **Thamirabarani**.

5. MiG-21 Fighter Jet

Why in news: The Indian Air Force is set to retire the MiG-21 Bison by September 2025, ending the service of India's longest-operating supersonic jet fighter.



Q. With reference to the MiG-21 aircraft of the Indian Air Force, consider the following statements:

- 1. The MiG-21 Bison variant will be fully retired from the IAF fleet by 2025.
- 2. The aircraft was originally designed by a Soviet bureau and later fully redesigned by HAL for Indian conditions.
- 3. The MiG-21 has participated in every major India–Pakistan conflict since its induction.
- 4. It is among the most produced jet aircraft in aviation history.

Which of the above statements are correct?

- A. 1, 3 and 4 only
- B. 1 and 2 only
- C. 2 and 3 only
- D. All the statements are correct

Answer: A. 1, 3 and 4 only. Statement 2 – Incorrect. The MiG-21 was designed by the **Mikoyan-Gurevich Bureau (USSR)**. HAL license-produced it in India, but did not redesign it completely.

26 July (Saturday)

1. Preah Vihear Temple
2. Syros Island
3. Palna Scheme
4. Long-Billed Bush Warbler

1. Preah Vihear Temple

Why in news: Tensions between Thailand and Cambodia have escalated over the Preah Vihear Temple, an 11th century Hindu temple dedicated to Lord Shiva, located atop a cliff in Preah Vihear Province, northern Cambodia, near the Dangrek Mountains



Q) Which of the following statements about the Preah Vihear Temple is/are correct?

1. The temple was built during the Khmer Empire and is dedicated to Lord Vishnu.
2. The International Court of Justice (ICJ) awarded the temple to Cambodia in 1962.
3. Thailand disputes the ownership of the surrounding territory despite the ICJ's 2013 reaffirmation.
4. The temple complex includes five gopuras linked by an 800-metre passage.

Select the correct answer using the code given below:

- (a) 1 and 2 only
- (b) 1, 3 and 4 only
- (c) 2, 3 and 4 only
- (d) 1, 2, 3 and 4

Answer: (C) 2, 3 and 4 only. Statement 1 is incorrect → The temple is dedicated to Lord Shiva, not Vishnu.

2. Syros Island

Why in news: Recently, Syros Island in Greece was in the news after Israeli tourists were turned away due to a protest over the Gaza war.

Q. With reference to Syros Island, consider the following statements:

1. It is part of the **Cyclades island group** in the **Mediterranean Sea**.
2. **Ermoupoli** is both the capital of Syros and the South Aegean region.
3. The island's highest elevation is more than **500 metres above sea level**.
4. Maritime trade and commercial shipping are the primary sources of revenue.



IAS/KAS/ACF/PSI/VO/AO &AAO/RFO

Which of the above statements are correct?

- A. Only one statement is correct
- B. Only 2 statements are correct
- C. Only 3 statements are correct
- D. All the statements are correct

Answer: B — Only 2 statements are correct

Greece shares land borders with four countries: **Albania** to the northwest, North **Macedonia** and **Bulgaria** to the north, and **Turkey** to the east

- **Statement 1 — Incorrect-** Syros is part of the **Cyclades** in the **Aegean Sea**, not the broader Mediterranean Sea (even though the Aegean is a subdivision of the Mediterranean)
- **Statement 3 — Incorrect-** Highest elevation is **442 metres**, not over 500 m.

3. Long-Billed Bush Warbler

Why in news: Recently, after 46 years, the elusive Long Billed Bush Warbler (*Locustella major*) was sighted in Ladakh's Suru Valley, marking its first confirmed sighting in India in decades.

- A **medium-sized** songbird (15–17 cm), it has brownish olive plumage, a long tail and bill, with paler underparts; both sexes look alike.
- **IUCN Red List:** Near Threatened
- Found in the mountains of Central Asia, including parts of India, Pakistan and china



4. Palna Scheme

Why in news: The Palna Scheme, recently highlighted in the Rajya Sabha, is a Centrally Sponsored initiative by the Ministry of Women and Child Development under the Samarthya vertical of Mission Shakti.

Q) With reference to the Palna Scheme, consider the following statements:

1. It provides crèche services only to **employed mothers**.
2. It is part of the Samarthya vertical under Mission Shakti.
3. Crèche facilities under the scheme include early stimulation and preschool education.
4. The scheme allows flexibility in crèche timing based on local needs.

Which of the above statements are Wrong?

- A. Only one statement is Wrong
- B. Only 2 statements are Wrong
- C. Only 3 statements are Wrong
- D. All the statements are Wrong

Correct Answer: C — Only 3 statements are correct. **Statement 1 — Incorrect.** The scheme provides services to all mothers, not only employed mothers. Inclusivity is a core feature.

PALNA SCHEME NOTES	
Context: Union Women and Child Development Ministry plans to set up 17,000 creches in Anganwadi centres across India under the 'Palna' scheme (means 'to nourish')	
Specifications	Details
About the Scheme	The Palna Scheme is a centrally sponsored initiative by the Ministry of Women and Child Development , formerly known as the National Creche Scheme . The Scheme is part of Samarthya which is a sub-component under Mission Shakti .
Aim	1) To address the urgent need for quality day-care facilities/creches for the children of working women. 2) To improve nutrition and health status of children.
What is a Creche?	A creche is a facility that allows parents to leave their children in a supervised environment while they are at work.
Maternity Benefit Act	Maternity Benefit Act, 2017 requires every establishment having fifty or more employees to have the facility of creche within a prescribed distance
Focus of the Scheme	The scheme focuses on two types of creches : 1) Anganwadi-cum-Creches : These centres combine existing Anganwadi services with dedicated creche facilities. This approach aims to holistically address the needs of both mothers and children in one convenient location. 2) Stand-alone creches : The creches which were running under the erstwhile National Creche Scheme have been included as Stand Alone Creches.
Services Included	The program encompasses early stimulation services for children under 3 years, including sleeping facilities. For children aged 3 to 6 years, it provides pre-school education . Additionally, health check-ups and immunizations aligned with POSHAN 2.0 are part of the initiative.
Target Group	Under the scheme, two extra creche workers will be appointed in Anganwadis. The scheme focuses on children of 6 months to 6 years , of working women in rural and urban areas who are employed for a minimum period of 15 days in a month , or six months in a year.
Benefits	Institutionalization of day-care centres , formalization of India's Care Economy, and ensuring safety, health, and nutrition benefits for children.
About Mission Shakti	It is focused on women's safety and empowerment , comprising two sub-schemes: Sambal (addressing safety and security with initiatives like One Stop Centre and Women Helpline) and Samarthya (focusing on women's empowerment through programs like Ujjwala and SwadharGreh)

28 July (Monday)

1. **National Financial Reporting Authority (NFRA)**
2. **Environmental Flow (e-Flow)**
3. **Bhitarkanika National Park**
4. **Raorchestes jadoh and Raorchestes jakoid**
5. **Sohrai Paintings**

1. National Financial Reporting Authority (NFRA)

Why in news: Nitin Gupta, former CBDT Chairman, has been appointed as the new Chairperson of NFRA.

Q) Which of the following statements regarding the National Financial Reporting Authority (NFRA) is/are correct?

1. NFRA was established under the Companies Act 1956.
2. It has powers similar to a civil court during investigations.
3. Its jurisdiction extends to listed companies and certain large unlisted public companies.
4. Only a serving IAS officer can be appointed as the Chairperson of NFRA.

Select the correct answer using the code given below:

- A. 2 and 3 only
- B. 1, 2 and 4 only
- C. 3 and 4 only
- D. 1 and 2 only

Answer: A — 2 and 3 only

Cabinet Decision
March 01, 2018

National Financial Reporting Authority (NFRA)

• Cabinet approves establishment of National Financial Reporting Authority (NFRA) and creation of one post of Chairperson, three posts of full-time Members and one post of Secretary for NFRA

• NFRA will act as an independent regulator for the auditing profession which was one of the key changes brought in by the Companies Act, 2013

• Jurisdiction of NFRA for investigation of Chartered Accountants and their firms under section 132 of the Act would extend to listed companies and large unlisted public companies, the thresholds for which shall be prescribed in the Rules. The Central Government can also refer such other entities for investigation where public interest would be involved.

• Impact- decision is expected to result in improved foreign/domestic investments, enhancement of economic growth, supporting the globalisation of business by meeting international practices, and assist in further development of audit profession

Functions: It recommends accounting/auditing standards, monitors compliance, and oversees service quality of auditing professionals, with powers to investigate misconduct.

2. Environmental Flow (e-Flow)

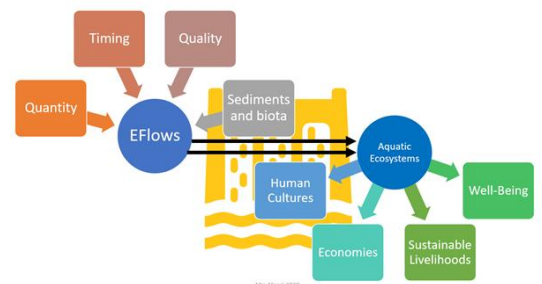
Why in news: The Union Jal Shakti Minister recently chaired a meeting to review the environmental flow (e-flow) of the Ganga River and its tributaries.

Q) With reference to Environmental Flow (e-Flow), consider the following statements:

1. e-Flow refers only to the **minimum volume** of water that must be released downstream of a dam.
2. Maintaining e-Flow helps **restore riverine** biodiversity, including fish habitats.
3. e-Flow ensures ecological balance but has no significant impact on economic sustainability.
4. **Pollution, dams, and encroachments** are major factors affecting natural river flow in India.

Which of the above statements are correct?

- A. 1 and 2 only
- B. 1, 2 and 3 only





ನಮ್ಮ ಭೋಜನ

- C. 1, 3 and 4 only
D. 2 and 4 only

Answer: D — 2 and 4 only. Statement 1 — Incorrect **e-Flow** refers to the quantity, timing, and quality of water needed for ecosystem health. It is not just the minimum flow. Statement 3 — Incorrect **e-Flow** has significant economic benefits: maintains fisheries, supports agriculture, ensures long-term sustainable use of water resources

3. Bhitarkanika National Park

Why in news: A 6.3-foot-long female saltwater crocodile was recently captured from a village pond near **Bhitarkanika National Park, Odisha**.

Q) With reference to Bhitarkanika National Park, consider the following statements:

1. It is designated as a **Ramsar site** and forms **India's second-largest mangrove ecosystem**.
2. It hosts **India's largest population of saltwater crocodiles** and is located in the delta of the **Brahmani, Baitarani, and Dhamra rivers**.
3. **Gahirmatha Beach**, located west of the park, is the world's largest nesting site for Olive Ridley turtles.

Which of the statements given above is/are correct?

- A. 1 and 2 only
B. 2 and 3 only
C. 1 and 3 only
D. 1, 2 and 3

- Situated in **Kendrapara district, Odisha**, the park spans 672 sq. km across the delta of **Brahmani, Baitarani, and Dhamra rivers**.
- It hosts **India's largest population of endangered saltwater crocodiles**, and the **Gahirmatha Beach** is the **world's largest nesting site of Olive Ridley turtles**.

Answer: A. 1 and 2 only. Statement 3 is incorrect – Gahirmatha Beach lies to the **east**, not the west

4. Raorchestes jadoh and Raorchestes jakoid

Why in news: Two new species of bush frogs, **Raorchestes jadoh** and **Raorchestes jakoid**, have been recently discovered in **Meghalaya** by researchers.

- Two new bush frog species have been discovered in Meghalaya, named after iconic elements of **Khasi language and tradition**.
- The species — **Raorchestes jakoid** and **Raorchestes jadoh** — were described in the latest issue of the **Journal of Threatened Taxa**.
- **'Jakoid'** is the **Khasi word for 'frog'**, while **'Jadoh'** is a beloved rice-and-meat delicacy central to Khasi cuisine.



Two new frog species from Meghalaya named after Khasi culture

5. Sohrai Paintings

Why in news: Sohrai paintings from prominently featured at the second edition Artists in Residence Programme held at



Sohrai Painting

Jharkhand were of Kala Utsav 2025 – Rashtrapati Bhavan.

Q) Which of the statements given below are correct, with reference to Sohrai paintings?



ನಮ್ಮ ಭವಿಷ್ಯ

IAS/KAS/ACF/PSI/VO/AO &AAO/RFO

1. These mural artworks date back to the **Paleolithic period** and motifs similar to them are found in the Isko rock shelters of Jharkhand.
2. Sohrai paintings are traditionally made using natural materials such as clay, charcoal, and soil.
3. The art form is practiced exclusively by the Santal and Kurmi tribes of Jharkhand.
4. Sohrai art from the **Hazaribagh region** has been granted a **Geographical Indication (GI)** tag.

- A. 1, 2 and 4 only
B. 2 and 3 only
C. 1 and 3 only
D. 2 and 4 only

Answer: D. 2 and 4 only. Statement 1 is incorrect — The art dates back to the **Mesochalcolithic period**; similar motifs appear in the Isko rock shelters. **Statement 3 is incorrect** – It is practiced by multiple tribes (Kurmi, Santal, Munda, Oraon, etc.), not exclusively by two.

29 July (Tuesday)

1. Exercise Bold Kurukshetra 2025
2. Exercise Drone Prahar
3. Discovery of New Wasp Species
4. Barents Sea

1. Exercise Bold Kurukshetra 2025

Why in news: The 14th edition of Exercise **Bold Kurukshetra** between **India and Singapore** commenced in July 2025 at Jodhpur, scheduled to continue till 04 August 2025.

Q) With reference to Exercise Bold Kurukshetra, consider the following statements:

1. It is a **bilateral military exercise** between the **Indian Army and the Singapore Armed Forces**.
2. The 2025 edition focuses on mechanised warfare and includes a **Computer-Based Wargame component**.
3. The exercise was first conducted in 2015 as part of India–Singapore defence cooperation.
4. Its **primary objective** is to **enhance interoperability under a UN mandate**.

Which of the statements given above are correct?

- A. 1, 2 and 4 only
B. 1 and 2 only
C. 2 and 3 only
D. 1, 2, 3 and 4

Answer: A. 1, 2 and 4 only. Statement 3 is incorrect – It began in **2005**, not 2015.

2. Exercise Drone Prahar

Why in news: In July 2025, the Indian Army conducted Exercise Drone Prahar in Arunachal Pradesh to assess the integration of drone technology into modern warfare.



IAS/KAS/ACF/PSI/VO/AO &AAO/RFO

Q) With reference to Exercise Drone Prahar conducted by the Indian Army, consider the following statements:

1. The **exercise was held in Andra Pradesh** to test the integration of drones in intelligence, surveillance, and reconnaissance (ISR) roles.
2. It was conducted at Rayang Military Station in the East Siang district under realistic operational conditions.
3. The exercise focused exclusively on offensive drone strikes, without evaluating communication or coordination mechanisms.
4. Sensor-to-shooter integration and airspace deconfliction were among the key parameters assessed.

Which of the statements given above are correct?

- A. 1, 2 and 4 only
- B. 1 and 3 only
- C. 2 and 4 only
- D. 1, 2, 3 and 4

Answer: C. 2 and 4 only. Statement 3 is incorrect-It *did* evaluate secure communication protocols, inter-service coordination, and airspace management.

2. Discovery of New Wasp Species

Why in news: In July 2025, scientists from the **Zoological Survey of India (ZSI)** discovered four new species of **parasitoid wasps in West Bengal** that parasitise spider eggs.

- These wasps are primary egg parasitoids of jumping spiders (Salticidae) and deposit eggs inside spider egg sacs.
- These wasps play a vital role in regulating spider populations, helping maintain balance in the arthropod ecosystem.

3. Barents Sea

Why in news: In July 2025, Russia deployed Bastion missile launchers along the Barents Sea coast during a major naval drill, "July Storm," highlighting its strategic military value.

Q) With reference to the Barents Sea, consider the following statements:

1. It lies between the **Arctic Ocean** and the southern coasts of Greenland and Canada.
2. The Gulf Stream contributes to the Barents Sea being warmer than other **sub-Arctic regions**.
3. The Barents Sea is bounded by **Novaya Zemlya, Kola Peninsula and Svalbard**.
4. The Pechora Sea and the White Sea are considered parts of the Barents Sea.

Which of the statements given above are correct?



Boundaries & Features • It is bounded by **Svalbard, Franz Josef Land, Novaya Zemlya, Kola Peninsula, and Norwegian Sea**, and includes White Sea and Pechora Sea as parts.



ನಮ್ಮ ಪೂರೈಕೆ

ನಮ್ಮ FORESIGHT

IAS/KAS/ACF/PSI/VO/AO & AAO/RFO

- A. 1 only
- B. 2 only
- C. 2, 3 and 4 only
- D. None of the above

Answer: C (2, 3 and 4 only) Statement 1 – **Incorrect:** The Barents Sea does *not* lie near Greenland or Canada; it lies between **Norway and Russia** in the Arctic Ocean.

30 July (Wednesday)

1. Zonal Cultural Centres
2. Gavri Festival
3. Baitarani River
4. Paithani Sarees
5. e-SHRAM Portal

1. Zonal Cultural Centres

Why in news: The Government of India recently reviewed the status of setting up **7 Zonal Cultural Centres (ZCCs)**. These centres are instrumental in promoting India's folk, tribal, and vanishing art forms, especially among youth.

Q. With reference to the Zonal Cultural Centres (ZCCs) in India, consider the following statements:

1. ZCCs function as autonomous institutions under the Ministry of Culture.
2. One of the key objectives of ZCCs is to promote folk, tribal, and vanishing art forms among the youth.
3. The headquarters of all ZCCs are located only in state capitals.

Which of the statements given above is/are correct?

- A. 1 and 2 only
- B. 2 and 3 only
- C. 1 and 3 only
- D. 1, 2 and 3

Answer: A. 1 and 2 only. Headquarters are in Patiala, Nagpur, Udaipur, Prayagraj, Kolkata, Dimapur, Thanjavur → not all are state capitals → Statement 3 is incorrect.

2. Gavri Festival

Why in news: The Bhil community of Mewar, Rajasthan, has commenced the 40-day Gavri festival, a traditional tribal ritual of dance-drama.

Q) Gavri Festival, consider the following statements:

1. Gavri is celebrated by the **Bhil community of southern Rajasthan** as a ritualistic dance-drama lasting around 40 days.
2. **Both men and women participate** as performers in various characters of the festival.

PROMOTION OF INDIAN CULTURE

To showcase and spread awareness amongst the masses about the culture and heritage of India, GoI has set up seven Zonal Cultural Centres (ZCCs).

Zonal Cultural Centres (ZCCs)	Headquarter
North Zone Cultural Centre	Patiala
West Zone Cultural Centre	Udaipur
South Zone Cultural Centre	Thanjavur
South Central Zone Cultural Centre	Nagpur
Eastern Zonal Cultural Centre	Kolkata
North Central Zone Cultural Centre	Prayagraj
North East Zone Cultural Centre	Dimapur

These ZCCs also conduct outreach programmes in far flung areas in the country to make the masses aware about the various art forms of India including its vast ancient culture.

ನಮ್ಮ ಪೂರೈಕೆ

Gavri Festival

Tribal Resistance and Ritual Theatre of the Mewar Bhils

3. The festival depicts mythological stories such as the battle between Goddess Durga and Demon Bhakasur.
4. The performances are staged in the villages of married daughters and sisters to pray for their wellbeing.

How many of the above statements are correct?

- A. Only one
- B. Only two
- C. Only three
- D. All four

Historical Roots: • The tradition dates back to the 3rd–4th century, prevalent during the reign of Siddh Raj Jai Singh of Gujarat.

Answer: b. Only two. Statement 2 is incorrect — Only men perform all roles. Statement 3 is correct — It includes stories like Goddess Amba vs Demon Bhiamwal.

3. Baitarani River

Why in news: The Baitarani River recently crossed the danger mark, causing floods in low-lying areas of Bhadrak district, Odisha.

Q) Consider the following statements regarding the Baitarani River:

1. The Baitarani River originates in the **Gonasika Hills** of Odisha and initially flows underground before resurfacing.
2. It forms a continuous boundary between **Odisha and Jharkhand** for most of its course.
3. The river **drains into the Bay of Bengal** after flowing for about 360 km.
4. Major tributaries of the river include **Salandi and Kusei**.

How many of the above statements are correct?

- A. Only one
- B. Only two
- C. Only three
- D. All four

ನಮ್ಮ ಭೋವೈಟ್

Answer: C. Only three. Statement 2 is incorrect — It forms the Odisha–Jharkhand boundary only briefly, not throughout its course.

4. Paithani Sarees

Why in news: Recently, the Prime Minister praised the intricate craftsmanship of Paithani sarees during his monthly radio programme.

Q) With reference to Paithani Sarees, consider the following statements:

1. **Paithani sarees originated** from a town located on the **banks of the Godavari River**.
2. They are known for **handwoven pure silk** and **gold zari**, along with motifs such as peacocks and lotuses.



The most celebrated and traditionally fashionable fabric of Maharashtra, is the Paithani Sari. It holds the title of the **Mahavastara of Maharashtra** (great cloth of Maharashtra). The name Paithani is derived from the **city of Paithan** where the sarees were being weaved originally.

IAS/KAS/ACF/PSI/VO/AO & AAO/RFO

3. Paithani sarees are traditionally referred to as the **Mahavastra of Maharashtra**.
4. They received the Geographical Indication (GI) tag prior to 2000.

How many of the above statements are Wrong?

- A. Only one
- B. Only two
- C. Only three
- D. All four

Answer: A. Only one. Statement 4 is incorrect — They received the GI tag in **2010**, not before 2000.

2. e-SHRAM Portal

Why in news: As of 22nd July 2025, over **30.95 crore unorganised workers have registered on the e-SHRAM portal**, according to the Ministry of Labour & Employment.

Q. With reference to the e-SHRAM Portal, consider the following statements:

1. The e-SHRAM Portal aims to create a national database of unorganised workers to improve their access to social security and employment opportunities.
2. Workers covered under EPFO or ESIC are eligible for registration on the portal.
3. The portal provides a Universal Account Number (UAN) and multilingual support in **22 languages**.
4. **Launched on 26th August 2019**. Data from the portal is shared with states and BOCW Welfare Boards to strengthen welfare delivery.

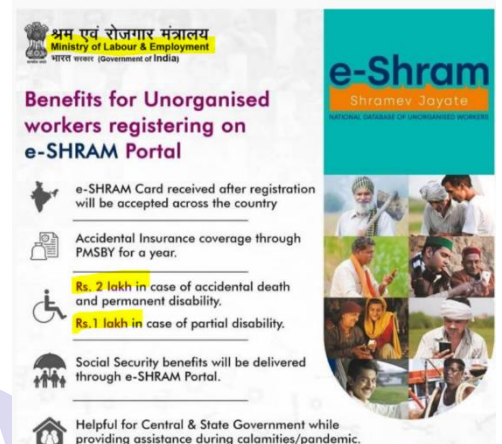
Which of the above statements is/are correct?

- A. 1, 3 and 4 only
- B. 1 and 2 only
- C. 2 and 3 only
- D. 1 and 3 only

Launched on 26th August 2021, the portal aims to build the **first-ever national database of unorganised workers**, enhancing their access to social security, skill development, and employment opportunities.

Features: Provides a **Universal Account Number (UAN)**, multilingual support in **22 languages**, grievance redressal, and data sharing with states and BOCW Welfare Boards.

Answer: D. 1 and 3 only. 2 is incorrect — EPFO/ESIC covered workers are *not* eligible.



31 July (Thursday)

1. Kaziranga Tiger Reserve (KTR)
2. Exercise Divya Drishti
3. Pralay Missile

1. Kaziranga Tiger Reserve (KTR)

Why in news: Kaziranga Tiger Reserve (KTR) ranks third in tiger density in India, following Bandipur and Corbett



IAS/KAS/ACF/PSI/VO/AO &AAO/RFO

Q) Consider the following statements regarding **Kaziranga Tiger Reserve (KTR)**:

1. Kaziranga hosts tropical moist deciduous forests and alluvial grasslands.
2. It lies between the **Ganga River** and the **Mikir Hills in Assam**.
3. It is home to both the **Greater One-Horned Rhinoceros** and **Baer's pochard duck**.
4. It is part of the **Western Himalayan biodiversity hotspot**.

Which of the above statements are correct?

- A. Only one statement is correct
- B. Only 2 statements are correct
- C. Only 3 statements are correct
- D. All the statements are correct

- Designated a **National Park** in 1974, **Tiger Reserve** in 2006, **UNESCO World Heritage Site** in 1985, and an **Important Bird Area** by BirdLife International.

Answer: B. Only 2 statements are correct. **Statement 2 – Incorrect:** It is located *between the Brahmaputra River* in the north and the *Karbi/Mikir Hills* in the south. **Statement 4 – Incorrect:** Kaziranga lies in the **Eastern Himalayan biodiversity hotspot**, not the Western Himalaya.

2. Exercise Divya Drishti

Why in news: The Indian Army recently conducted Exercise Divya Drishti in East Sikkim's high-altitude areas to assess advanced warfare technologies.

Q) With reference to **Exercise Divya Drishti**, consider the following statements:

1. The exercise was conducted by the **Indian Army** in the high-altitude areas of **East Sikkim**.
2. The primary aim was to test **AI-enabled surveillance** tools for battlefield awareness and quicker decision-making.
3. The **Trishakti Corps**, **headquartered in Sukna**, led the exercise using both ground systems and aerial platforms.
4. The exercise focused exclusively on manned aircraft and avoided the use of UAVs or drones.

Which of the above statements are correct?

- A. 1, 2, and 3 only
- B. 1 and 4 only
- C. 2 and 3 only
- D. All four statements

Answer: A — 1, 2, and 3 only. **Statement 4 – Incorrect:** The exercise *did* use **UAVs, drones, and AI-enabled sensors**—it did **not** avoid them.

3. Pralay Missile

Why in news: DRDO recently conducted two successful test flights of the Pralay missile from Dr APJ Abdul Kalam Island, Odisha.



The Indian Army recently conducted 'Exercise Divya Drishti' in the high-altitude regions of **East Sikkim** to test advanced military technologies. It was designed to test new technologies that are designed to improve battlefield awareness, real-time surveillance, and

PRALAY: Surface-to-Surface Missile

Pralay is a canisterised tactical, surface-to-surface, and short-range ballistic missile for battlefield use developed by the Defence Research and Development Organisation of India

ENGINE: Two stage rocket motor with third stage MaRV

SPEED: Mach 1 to 1.6

RANGE: 150-500 km

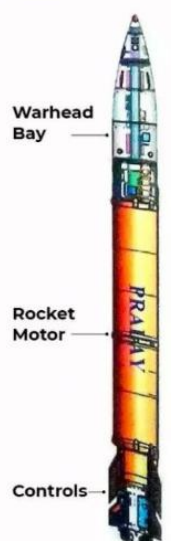
TRAJECTORY: low

GUIDANCE SYSTEM: Inertial navigation system

LAUNCH PLATFORM: 8x8 BEML-Tatra transporter erector launcher

MASS: 5 tonnes (4.9 long tons; 5.5 short tons)

OPERATIONAL RANGE: 150-500 km (93-311 mi)



Can change its path after covering certain range mid-air and is difficult to be tracked

It is capable of being launched from a mobile launcher and has latest navigation system and integrated avionics

It has the capability to defeat interceptor missiles

Q) Pralay missile:

1. It is a **liquid-fueled ballistic missile developed by ISRO.**
2. The missile has the ability to alter its path mid-flight and reach speeds up to Mach 6.1.

Which of the above statements is/are correct?

- A. Both the statements are correct
- B. None of the statements are correct
- C. 1 only
- D. 2 only

Answer: D. 2 only . Statement 1 – Incorrect: Pralay is **not liquid-fueled**; it is a **solid-propellant** quasi-ballistic missile. It is developed by **DRDO**, not ISRO



The Current Affairs Monthly Magazine provides a comprehensive and exam-oriented compilation of national and international events, presented in a structured and easy-to-understand format. Each edition ensures day-wise analysis of key developments, supported by YouTube classes for better conceptual clarity. The magazine effectively integrates both Prelims and Mains perspectives, making it highly relevant for aspirants of competitive exams. Its unique feature, MCQ-based analysis, helps in quick revision and self-assessment. The content is concise, authentic, and regularly updated to reflect the latest issues. The exam-focused presentation style ensures that learners can easily link static and dynamic portions of the syllabus. Overall, it serves as a one-stop resource for aspirants seeking holistic preparation and conceptual clarity in current affairs.

-NAMMA FORESIGHT ACADEMY

